

Datasheet for ABIN530982
anti-WFDC5 antibody (AA 25-123)



[Go to Product page](#)

1 Image

Overview

Quantity:	100 µg
Target:	WFDC5
Binding Specificity:	AA 25-123
Reactivity:	Human
Host:	Mouse
Clonality:	Monoclonal
Conjugate:	This WFDC5 antibody is un-conjugated
Application:	Western Blotting (WB), ELISA

Product Details

Purpose:	Mouse monoclonal antibody raised against a partial recombinant WFDC5.
Immunogen:	WFDC5 (NP_663627, 25 a.a. ~ 123 a.a) partial recombinant protein with GST tag. MW of the GST tag alone is 26 KDa.
Sequence:	RKKGEKSSGGC PPDDGPCLLS VPDQCVEDSQ CPLTRKCCYR ACFRQCVPRV SVKLGSCPED QLRCLSPMNH LCHKDSDCSG KKRCCHSACG RDCRDPARG
Clone:	5G5
Isotype:	IgG2a
Cross-Reactivity:	Human
Characteristics:	Antibody Reactive Against Recombinant Protein.

Target Details

Target:	WFDC5
Alternative Name:	WFDC5 (WFDC5 Products)
Background:	Full Gene Name: WAP four-disulfide core domain 5 Synonyms: PRG5,WAP1,dJ211D12.5
Gene ID:	149708
NCBI Accession:	NM_145652

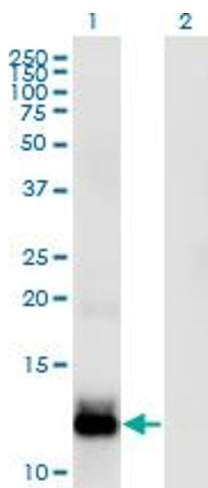
Application Details

Application Notes:	Optimal working dilution should be determined by the investigator.
Restrictions:	For Research Use only

Handling

Buffer:	In 1x PBS, pH 7.4
Handling Advice:	Aliquot to avoid repeated freezing and thawing.
Storage:	-20 °C
Storage Comment:	Store at -20°C or lower. Aliquot to avoid repeated freezing and thawing.

Images



Western Blotting

Image 1. Western Blot analysis of WFDC5 expression in transfected 293T cell line by WFDC5 monoclonal antibody (M03), clone 5G5.

Lane 1: WFDC5 transfected lysate (Predicted MW: 13.3 kDa).

Lane 2: Non-transfected lysate.