



[Go to Product page](#)

Datasheet for ABIN530992
anti-CCT8L2 antibody (AA 1-557)

2 Images

Overview

Quantity:	100 µg
Target:	CCT8L2
Binding Specificity:	AA 1-557
Reactivity:	Human
Host:	Mouse
Clonality:	Monoclonal
Conjugate:	This CCT8L2 antibody is un-conjugated
Application:	Western Blotting (WB), ELISA, RNA Interference (RNAi)

Product Details

Purpose:	Mouse monoclonal antibody raised against a full length recombinant CESK1.
Immunogen:	CESK1 (AAH33797, 1 a.a. ~ 557 a.a) full-length recombinant protein with GST tag. MW of the GST tag alone is 26 KDa.
Sequence:	MDSTVPSALE LPQRLALNPR ESPRSPEEEEE PHLLSSLA AV QTLASVIRPC YGPHGRQKFL VTMKGETVCT GCATAILRAL ELEHPAAWLL REAGQTQAEN SGDGTAFVVL LTEALLEQAE QLLKAGLPRP QLREAYATAT AEVLATLPSL AIQSLGPLED PSWALHSVMN THTLSPMDHL TKLVAHACWA IKELDGSFKP ERVGVICALPG GTLEDSCLLP GLAISGKLCG QMATVLSGAR VALFACPFPG AHPNAPATAR LSSPADLAQF SKGSDQLLEK QVGQLAAAGI NVAVVLGEVD EETLTLADKY GIVVIQARSW MEIYLSEVL DTPLLPRLLP PQRPGKCQRV YRQELGDGLA VVFWEECTGT PALTVWLRGA TTQGLRSAEQ AVYHGIDAYF QLCQDPRLIP GAGATEMALA KMLSDKGSRL EGPSGPAFLA FAWALKYLPK TLAENAGLAV SDVMAEMSGV HQGGNLLMGV GTEGIINVAQ EGVWDTLIVK AQGFRAVAEV VLQLVTVDEI VVAKKSPTHQ EIWNPDSSKKT

Product Details

KKHPPPVETK KILGLNN

Clone: 4G6

Isotype: IgG2a

Cross-Reactivity: Human

Characteristics: Antibody Reactive Against Recombinant Protein.

Target Details

Target: CCT8L2

Alternative Name: CCT8L2 ([CCT8L2 Products](#))

Background: Full Gene Name: chaperonin containing TCP1, subunit 8 (theta)-like 2
Synonyms: CESK1,MGC118839,MGC118840

Gene ID: 150160

Application Details

Application Notes: Optimal working dilution should be determined by the investigator.

Restrictions: For Research Use only

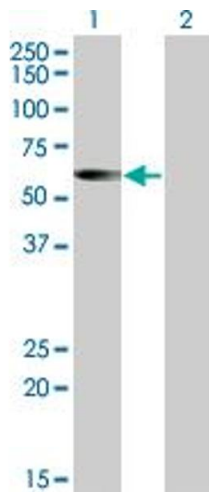
Handling

Buffer: In 1x PBS, pH 7.4

Handling Advice: Aliquot to avoid repeated freezing and thawing.

Storage: -20 °C

Storage Comment: Store at -20°C or lower. Aliquot to avoid repeated freezing and thawing.

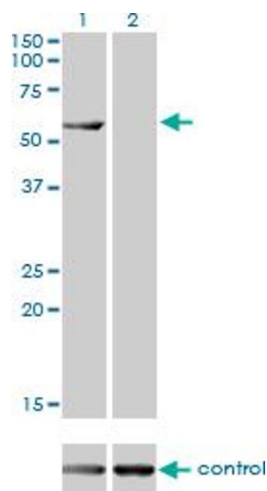


Western Blotting

Image 1. Western Blot analysis of CESC1 expression in transfected 293T cell line by CESC1 monoclonal antibody (M01), clone 4G6.

Lane 1: CESC1 transfected lysate(59.4 kDa).

Lane 2: Non-transfected lysate.



Western Blotting

Image 2. Western blot analysis of CESC1 over-expressed 293 cell line, cotransfected with CESC1 Validated Chimera RNAi (Lane 2) or non-transfected control (Lane 1). Blot probed with CESC1 monoclonal antibody (M01), clone 4G6. GAPDH (36.1 kDa) used as specificity and loading control.