

Datasheet for ABIN531014  
**anti-Phospholipase B antibody (AA 1-488)**



[Go to Product page](#)

2 Images

## Overview

Quantity:	50 µg
Target:	Phospholipase B (PLB)
Binding Specificity:	AA 1-488
Reactivity:	Human
Host:	Mouse
Clonality:	Polyclonal
Conjugate:	This Phospholipase B antibody is un-conjugated
Application:	Western Blotting (WB)

## Product Details

Purpose:	Mouse polyclonal antibody raised against a full-length human PLB1 protein.
Immunogen:	PLB1 (AAH65041, 1 a.a. ~ 488 a.a) full-length human protein.
Sequence:	MEPAGEKDEP LSVKHGRPMK CPSQESPYLF SYRNSNYLTR LQKPQDKLEV REGAEIRCPD KDPSTVPTS VHLKPADIN VIGALGDSL T AGNGAGSTPG NVLDVLTQYR GLSWSVGGDE NIGTVTTLAN ILREFNPSLK GFSVGTGKET SPNAFLNQAV AGGRAEDLPV QARRLVDMK NDTRIHQED WKIITLFIGG NDLCDFCNDL VHYSQNF TD NIGKALDILH AEPRAFVNL VTVLEIVNLR ELYQEKKVYC PRMILRSLCP CVLKFDDNST ELATLIEFNK KFQEKTHQLI ESGRYDTRED FTVVVQPFFE NVDMPKTSEG LPDNSFFAPD CFHFSSKSHS RAASALWNNM LEPVGQKTTR HKFENKINIT CPNQVQPFLR TYKNMQGHG TWLPCRDRAP SALHPTSVHA LRPADIQVVA ALGDSL TAGN GIGSKPDDL P DVTTQYRGLS YRESKPGFLS DSWVSKSNRK CTRKAPNP

## Product Details

Cross-Reactivity:	Human
Characteristics:	Antibody reactive against mammalian transfected lysate.

## Target Details

Target:	Phospholipase B (PLB)
Alternative Name:	PLB1 (PLB Products)
Background:	Full Gene Name: phospholipase B1 Synonyms: PLB
Gene ID:	151056

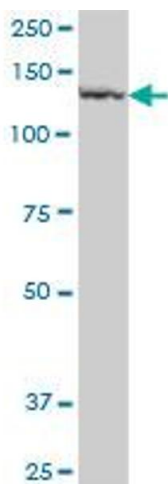
## Application Details

Application Notes:	Optimal working dilution should be determined by the investigator.
Restrictions:	For Research Use only

## Handling

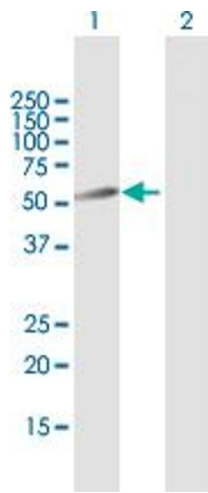
Buffer:	In 1x PBS, pH 7.4
Handling Advice:	Aliquot to avoid repeated freezing and thawing.
Storage:	-20 °C
Storage Comment:	Store at -20°C or lower. Aliquot to avoid repeated freezing and thawing.

## Images



### Western Blotting

**Image 1.** PLB1 MaxPab polyclonal antibody. Western Blot analysis of PLB1 expression in human colon.



### Western Blotting

**Image 2.** Western Blot analysis of PLB1 expression in transfected 293T cell line by PLB1 MaxPab polyclonal antibody.

Lane 1: PLB1 transfected lysate(53.68 kDa).

Lane 2: Non-transfected lysate.