



[Go to Product page](#)

Datasheet for ABIN531019

anti-ARL6IP6 antibody (AA 1-226)

1 Image

Overview

Quantity:	50 µg
Target:	ARL6IP6
Binding Specificity:	AA 1-226
Reactivity:	Human
Host:	Mouse
Clonality:	Polyclonal
Conjugate:	This ARL6IP6 antibody is un-conjugated
Application:	Western Blotting (WB)

Product Details

Purpose:	Mouse polyclonal antibody raised against a full-length human ARL6IP6 protein.
Immunogen:	ARL6IP6 (NP_689735.1, 1 a.a. ~ 226 a.a) full-length human protein.
Sequence:	MSFAESGWRS ALRRRGPGTP GPVARPSYSS FTQGDSWGEG EVDEEEGCDQ VARDLRAEFS AGAWSEPRKR SVLPPDGNGS PVLDPKRNGI FPAAAGSRAQ PRRWPVQVLS ILCSSLFAIL LAFLLAIAYL IVKELHAENL KNEDDVTGL LGFWTLLIIS LTAGFSCCSF SWTVTYFDSF EPGMFPPTPL SPARFKKLTG HSFHMGYSMA ILNGIVAALT VAWCLM
Cross-Reactivity:	Human
Characteristics:	Antibody reactive against mammalian transfected lysate.

Target Details

Target:	ARL6IP6
---------	---------

Target Details

Alternative Name:	ARL6IP6 (ARL6IP6 Products)
Background:	Full Gene Name: ADP-ribosylation-like factor 6 interacting protein 6 Synonyms: MGC33864,PFAAP1
Gene ID:	151188
NCBI Accession:	NM_152522
Pathways:	SARS-CoV-2 Protein Interactome

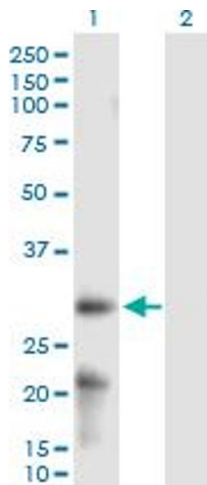
Application Details

Application Notes:	Optimal working dilution should be determined by the investigator.
Restrictions:	For Research Use only

Handling

Buffer:	In 1x PBS, pH 7.4
Handling Advice:	Aliquot to avoid repeated freezing and thawing.
Storage:	-20 °C
Storage Comment:	Store at -20°C or lower. Aliquot to avoid repeated freezing and thawing.

Images



Western Blotting

Image 1. Western Blot analysis of ARL6IP6 expression in transfected 293T cell line by ARL6IP6 MaxPab polyclonal antibody.

Lane 1: ARL6IP6 transfected lysate(24.70 kDa).

Lane 2: Non-transfected lysate.