

Datasheet for ABIN531020  
**anti-PPP1R1C antibody (AA 1-109)**[Go to Product page](#)

## 1 Image

## Overview

Quantity:	50 µg
Target:	PPP1R1C
Binding Specificity:	AA 1-109
Reactivity:	Human
Host:	Mouse
Clonality:	Polyclonal
Conjugate:	This PPP1R1C antibody is un-conjugated
Application:	Western Blotting (WB)

## Product Details

Purpose:	Mouse polyclonal antibody raised against a full-length human PPP1R1C protein.
Immunogen:	PPP1R1C (NP_001074014.1, 1 a.a. ~ 109 a.a) full-length human protein.
Sequence:	MEPNSPKKIQ FAVPVFQSQI APEAAEQIRK RRPTPASLVI LNEHNPPEID DKRGPNTQGE LQNASPKQRK QSVYTPPTIK GVKHLKGQNE SAFPEEEEEGT NEREEQRDH
Cross-Reactivity:	Human
Characteristics:	Antibody reactive against mammalian transfected lysate.

## Target Details

Target:	PPP1R1C
Alternative Name:	PPP1R1C ( <a href="#">PPP1R1C Products</a> )

Target Details

Background:	Full Gene Name: protein phosphatase 1, regulatory (inhibitor) subunit 1C Synonyms: IPP5
Gene ID:	151242
NCBI Accession:	<a href="#">XM_087137</a>

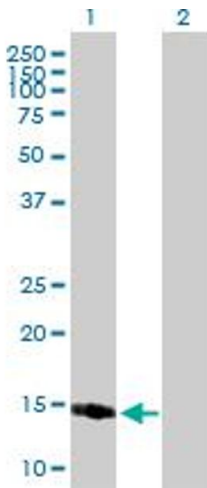
Application Details

Application Notes:	Optimal working dilution should be determined by the investigator.
Restrictions:	For Research Use only

Handling

Buffer:	In 1x PBS, pH 7.4
Handling Advice:	Aliquot to avoid repeated freezing and thawing.
Storage:	-20 °C
Storage Comment:	Store at -20°C or lower. Aliquot to avoid repeated freezing and thawing.

Images



**Western Blotting**

**Image 1.** Western Blot analysis of PPP1R1C expression in transfected 293T cell line by PPP1R1C MaxPab polyclonal antibody.

Lane 1: PPP1R1C transfected lysate(11.99 KDa).

Lane 2: Non-transfected lysate.