

Datasheet for ABIN531021
anti-PPP1R1C antibody (AA 1-109)

2 Images

[Go to Product page](#)

Overview

Quantity:	100 µg
Target:	PPP1R1C
Binding Specificity:	AA 1-109
Reactivity:	Human
Host:	Rabbit
Clonality:	Polyclonal
Conjugate:	This PPP1R1C antibody is un-conjugated
Application:	Western Blotting (WB), Immunofluorescence (IF)

Product Details

Purpose:	Rabbit polyclonal antibody raised against a full-length human PPP1R1C protein.
Immunogen:	PPP1R1C (NP_001074014.1, 1 a.a. ~ 109 a.a) full-length human protein.
Sequence:	MEPNSPKKIQ FAVPVFQSQI APEAAEQIRK RRPTPASLVI LNEHNPPEID DKRGPNTQGE LQNASPKQRK QSVYTPPTIK GVKHLKGQNE SAFPEEEEEGT NEREEQRDH
Cross-Reactivity:	Human
Characteristics:	Antibody reactive against mammalian transfected lysate.

Target Details

Target:	PPP1R1C
Alternative Name:	PPP1R1C (PPP1R1C Products)

Target Details

Background:	Full Gene Name: protein phosphatase 1, regulatory (inhibitor) subunit 1C Synonyms: IPP5
Gene ID:	151242
NCBI Accession:	XM_087137

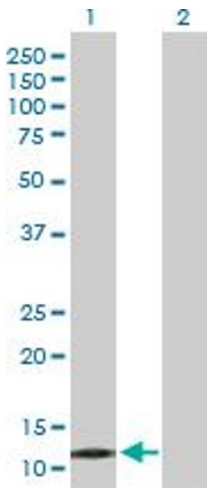
Application Details

Application Notes:	Optimal working dilution should be determined by the investigator.
Restrictions:	For Research Use only

Handling

Buffer:	In 1x PBS, pH 7.4
Handling Advice:	Aliquot to avoid repeated freezing and thawing.
Storage:	-20 °C
Storage Comment:	Store at -20°C or lower. Aliquot to avoid repeated freezing and thawing.

Images

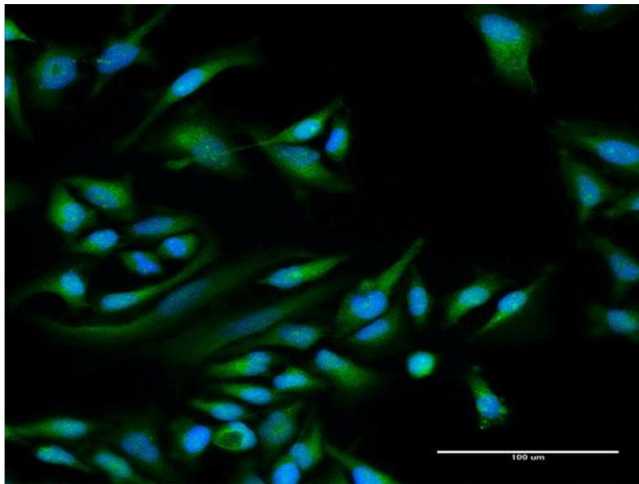


Western Blotting

Image 1. Western Blot analysis of PPP1R1C expression in transfected 293T cell line by PPP1R1C MaxPab polyclonal antibody.

Lane 1: PPP1R1C transfected lysate(12.30 KDa).

Lane 2: Non-transfected lysate.



Immunofluorescence

Image 2. Immunofluorescence of purified MaxPab antibody to PPP1R1C on HeLa cell. [antibody concentration 30 ug/ml]