



[Go to Product page](#)

Datasheet for ABIN531022  
**anti-PPP1R1C antibody (AA 1-109)**

1 Image

Overview

Quantity:	200 µL
Target:	PPP1R1C
Binding Specificity:	AA 1-109
Reactivity:	Human
Host:	Mouse
Clonality:	Monoclonal
Application:	Western Blotting (WB), ELISA

Product Details

Purpose:	Mouse monoclonal antibody raised against a full-length recombinant PPP1R1C.
Immunogen:	PPP1R1C (AAH17943.1, 1 a.a. ~ 109 a.a) full-length recombinant protein with GST tag. MW of the GST tag alone is 26 KDa.
Sequence:	MEPNSPKKIQ FAVPVFQSQI APEAAEQIRK RRPTPASLVI LNEHNPPEID DKRGPNTQGE LQNASPKQRK QSVYTPPTIK GVKHLKGQNE SAFPEEEEGT NEREEQRDH
Clone:	2G7
Isotype:	IgM kappa
Cross-Reactivity:	Human

Target Details

Target:	PPP1R1C
---------	---------

## Target Details

Alternative Name:	PPP1R1C (PPP1R1C Products)
Background:	Full Gene Name: protein phosphatase 1, regulatory (inhibitor) subunit 1C Synonyms: IPP5
Gene ID:	151242

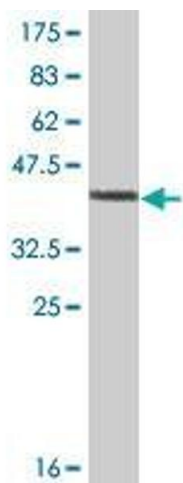
## Application Details

Application Notes:	Optimal working dilution should be determined by the investigator.
Comment:	Product Quality tested by: Antibody Reactive Against Recombinant Protein.
Restrictions:	For Research Use only

## Handling

Format:	Liquid
Buffer:	In ascites fluid
Handling Advice:	Aliquot to avoid repeated freezing and thawing.
Storage:	-20 °C
Storage Comment:	Store at -20°C or lower. Aliquot to avoid repeated freezing and thawing.

## Images



### Western Blotting

**Image 1.** Western Blot detection against Immunogen (37.73 KDa) .