



[Go to Product page](#)

Datasheet for ABIN531052
anti-SLC36A2 antibody (AA 1-71)

1 Image

Overview

Quantity:	50 µL
Target:	SLC36A2
Binding Specificity:	AA 1-71
Reactivity:	Human
Host:	Mouse
Clonality:	Polyclonal
Conjugate:	This SLC36A2 antibody is un-conjugated
Application:	ELISA, Western Blotting (WB)

Product Details

Purpose:	Mouse polyclonal antibody raised against a partial recombinant SLC36A2.
Immunogen:	SLC36A2 (NP_861441, 1 a.a. ~ 71 a.a) partial recombinant protein with GST tag.
Sequence:	MSVTKSTEGP QGAVAIKLDL MSPPEAKKL ENKDSTFLDE SPSESAGLKK TKGITVFQAL IHLVKGNMGT G
Cross-Reactivity:	Human
Characteristics:	Antibody Reactive Against Recombinant Protein.

Target Details

Target:	SLC36A2
Alternative Name:	SLC36A2 (SLC36A2 Products)

Target Details

Background:	Full Gene Name: solute carrier family 36 (proton/amino acid symporter), member 2 Synonyms: FLJ16051,MGC119658,MGC119660,PAT2,TRAMD1
Gene ID:	153201
NCBI Accession:	NM_181776
Pathways:	Proton Transport

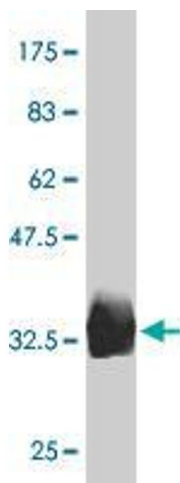
Application Details

Application Notes:	Optimal working dilution should be determined by the investigator.
Restrictions:	For Research Use only

Handling

Format:	Liquid
Buffer:	50 % glycerol
Handling Advice:	Aliquot to avoid repeated freezing and thawing.
Storage:	-20 °C
Storage Comment:	Store at -20°C or lower. Aliquot to avoid repeated freezing and thawing.

Images



Western Blotting

Image 1. Western Blot detection against Immunogen (33.92 KDa) .