



[Go to Product page](#)

Datasheet for ABIN531062

anti-PPP1R2P3 antibody (AA 1-205)

3 Images

Overview

Quantity:	100 µg
Target:	PPP1R2P3
Binding Specificity:	AA 1-205
Reactivity:	Human
Host:	Mouse
Clonality:	Monoclonal
Conjugate:	This PPP1R2P3 antibody is un-conjugated
Application:	ELISA, Western Blotting (WB), Immunofluorescence (IF)

Product Details

Purpose:	Mouse monoclonal antibody raised against a full length recombinant PPP1R2P3.
Immunogen:	PPP1R2P3 (AAH66922, 1 a.a. ~ 205 a.a) full-length recombinant protein with GST tag. MW of the GST tag alone is 26 KDa.
Sequence:	MAASTASHRP IKGILKNKTS TTSSMVASAE QPRRSVDEEL SKKSQKWDEI NILATYHPAD KGYGLMKIDE PSPPYHSMMG DDEDACRDTE TTEAMAPGIL AKKLAAAEGE EPKYRIQEQE SSGEEDSDLS PEEREKKRQF EMRRKLHYNE GLNIKLARQL ISKDLHDDDE DEEMLETADG ESMNTEESNQ GSTPSDQQQN KLRSS
Clone:	1H2
Isotype:	IgG1
Cross-Reactivity:	Human

Product Details

Characteristics: Antibody Reactive Against Recombinant Protein.

Target Details

Target: PPP1R2P3

Alternative Name: PPP1R2P3 ([PPP1R2P3 Products](#))

Background: Full Gene Name: protein phosphatase 1, regulatory (inhibitor) subunit 2 pseudogene 3
Synonyms: MGC87149

Gene ID: 153743

Application Details

Application Notes: Optimal working dilution should be determined by the investigator.

Restrictions: For Research Use only

Handling

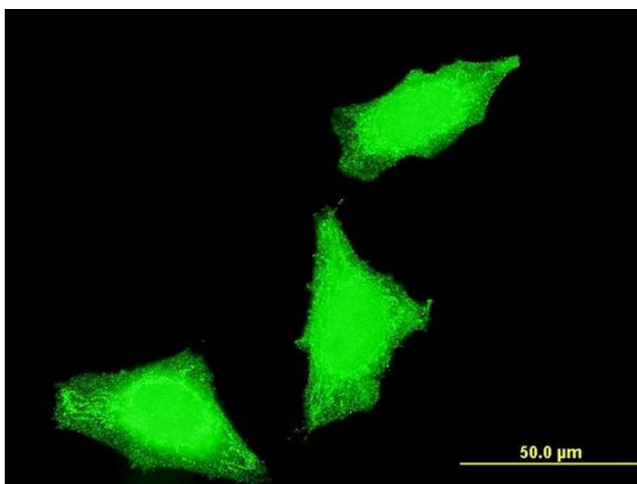
Buffer: In 1x PBS, pH 7.4

Handling Advice: Aliquot to avoid repeated freezing and thawing.

Storage: -20 °C

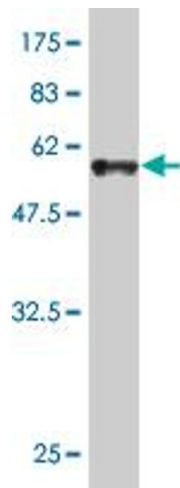
Storage Comment: Store at -20°C or lower. Aliquot to avoid repeated freezing and thawing.

Images



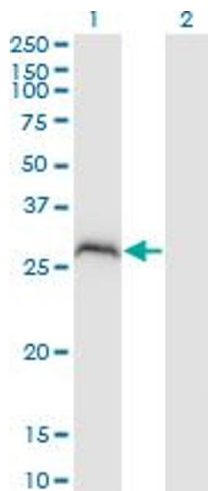
Immunofluorescence

Image 1. Immunofluorescence of monoclonal antibody to PPP1R2P3 on HeLa cell. [antibody concentration 10 ug/ml]



Western Blotting

Image 2. Western Blot detection against Immunogen (48.29 kDa).



Western Blotting

Image 3. Western Blot analysis of PPP1R2P3 expression in transfected 293T cell line by PPP1R2P3 monoclonal antibody (M02), clone 1H2.

Lane 1: PPP1R2P3 transfected lysate(23 kDa).

Lane 2: Non-transfected lysate.