



[Go to Product page](#)

Datasheet for ABIN531074  
**anti-AMOTL1 antibody (AA 1-956)**

1 Image

Overview

Quantity:	50 µg
Target:	AMOTL1
Binding Specificity:	AA 1-956
Reactivity:	Human
Host:	Mouse
Clonality:	Polyclonal
Conjugate:	This AMOTL1 antibody is un-conjugated
Application:	Western Blotting (WB)

Product Details

Purpose:	Mouse polyclonal antibody raised against a full-length human AMOTL1 protein.
Immunogen:	AMOTL1 (NP_570899.1, 1 a.a. ~ 956 a.a) full-length human protein.
Sequence:	MWRAKLRRGT CEPAVKGGSPS ACYSPSSPVQ VLEDSTYFSP DFQLYSGRHE TSALTVEATS SIREKVVEDP LCNFHSPNFL RISEVEMRGS EDAAAGTVLQ RLIQEQLRYG TPTENMNLLA IQHQATGSAG PAHPTNNFSS TENLTQEDPQ MVYQSARQEP QGQEHQVDNT VMEKQVRSTQ PQQNNEELPT YEEAKAQSQF FRGQQQQQQQ QGAVGHGYM AGGTSQKSRT EGRPTVNRAN SGQAHKDEAL KELKQGHVRS LSERIMQLSL ERNGAKQHLP GSGNGKGFV GGGPSPAQPA GKVLDPGPP PEYPFKTKQM MSPVSKTQEH GLFYGDQHPG MLHEMVKPY APQPVRTDVA VLRYPPEY GVTSRPCQLP FPSTMQQHSP MSSQTSSASG PLHSVSLPLP LPMALGAPQP PPAASPSQQL GPDAFAIVER AQQMVEILTE ENRVLHQELQ GYYDNADKLH KFEKELQRIS EAYESLVKST TKRESLDKAM RNKLEGEIRR LHDFNRDLRD RLETANRQLS SREYEGHEDK AAEGHYASQN KEFLKEKEKL EMELAAVRTA SEDHRRHIEI LDQALSNAQA RVIKLEEELR

## Product Details

---

EKQAYVEKVE KLQQALTQLQ SACEKREQME RRLRTWLERE LDALRTQQKH GNGQPANMPE  
YNAPALLELIV REKEERILAL EADMTKWEQK YLEESTIRHF AMNAAATAAA ERDTTIINHS  
RNGSYGESSL EAHIWQEEEE VVQANRRCQD MEYTIKNLHA KIEKDAMIK VLQQRSRKDA  
GKTDSSSLRP ARSVPSIAAA TGTHSRQTSL TSSQLAEEKK EECTWKGSIG LLLGKEHHEH  
ASAPLLPPPP TSALSSIAST TAASSAHAKT GSKDSSTQTD KSAELFWPSM ASLPSRGRLS  
TTPAHSPVLK HPAAKGTAEK LENSFGHGKS PDHRGRVSSL LHKPEFPDGE MMEVLI

Cross-Reactivity: Human

Characteristics: Antibody reactive against mammalian transfected lysate.

## Target Details

---

Target: AMOTL1

Alternative Name: AMOTL1 ([AMOTL1 Products](#))

Background: Full Gene Name: angiotenin like 1  
Synonyms: JEAP

Gene ID: 154810

NCBI Accession: [NM\\_130847](#)

## Application Details

---

Application Notes: Optimal working dilution should be determined by the investigator.

Restrictions: For Research Use only

## Handling

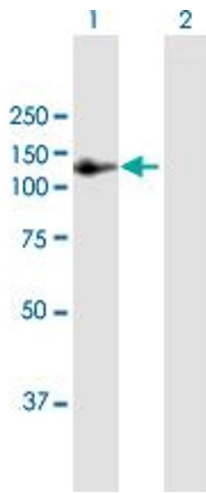
---

Buffer: In 1x PBS, pH 7.4

Handling Advice: Aliquot to avoid repeated freezing and thawing.

Storage: -20 °C

Storage Comment: Store at -20°C or lower. Aliquot to avoid repeated freezing and thawing.



### Western Blotting

**Image 1.** Western Blot analysis of AMOTL1 expression in transfected 293T cell line by AMOTL1 MaxPab polyclonal antibody.

Lane 1: AMOTL1 transfected lysate(105.16 KDa).

Lane 2: Non-transfected lysate.