

Datasheet for ABIN531086
anti-RASEF antibody (AA 631-740)[Go to Product page](#)

4 Images

Overview

Quantity:	100 µg
Target:	RASEF
Binding Specificity:	AA 631-740
Reactivity:	Human
Host:	Mouse
Clonality:	Monoclonal
Conjugate:	This RASEF antibody is un-conjugated
Application:	Western Blotting (WB), ELISA, Immunohistochemistry (Paraffin-embedded Sections) (IHC (p))

Product Details

Purpose:	Mouse monoclonal antibody raised against a partial recombinant RASEF.
Immunogen:	RASEF (AAH23566, 631 a.a. ~ 740 a.a) partial recombinant protein with GST tag. MW of the GST tag alone is 26 KDa.
Sequence:	NIREWVDMIE DAAHETVPIM LVGNKADIRD TAATEGQKCV PGHFGEKLAM TYGALFCETS AKDGSNIVEA VLHLAREVKK RTDKDDRSI TNLTGTNSKK SPQMKNCCNG
Clone:	2D5
Isotype:	IgG2b
Cross-Reactivity:	Human
Characteristics:	Antibody Reactive Against Recombinant Protein.

Target Details

Target:	RASEF
Alternative Name:	RASEF (RASEF Products)
Background:	Full Gene Name: RAS and EF-hand domain containing Synonyms: FLJ31614,RAB45
Gene ID:	158158

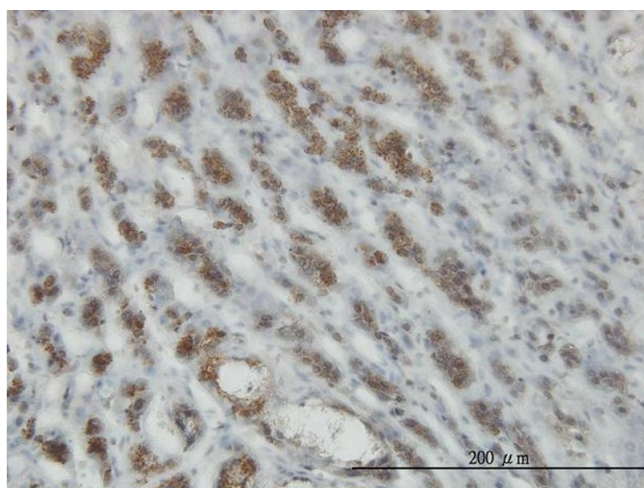
Application Details

Application Notes:	Optimal working dilution should be determined by the investigator.
Restrictions:	For Research Use only

Handling

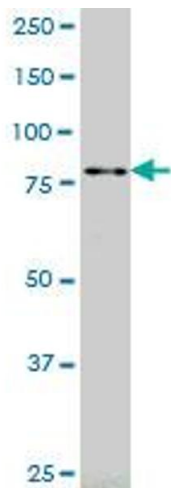
Buffer:	In 1x PBS, pH 7.4
Handling Advice:	Aliquot to avoid repeated freezing and thawing.
Storage:	-20 °C
Storage Comment:	Store at -20°C or lower. Aliquot to avoid repeated freezing and thawing.

Images



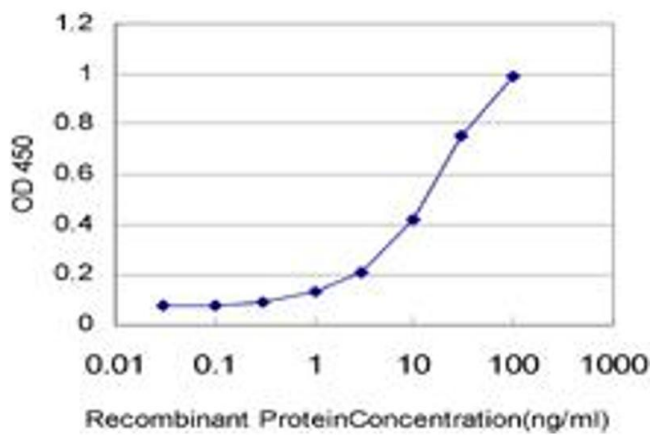
Immunostaining

Image 1. Immunoperoxidase of monoclonal antibody to RASEF on formalin-fixed paraffin-embedded human adrenal gland. [antibody concentration 3 ug/ml]



Western Blotting

Image 2. RASEF monoclonal antibody (M01), clone 2D5
Western Blot analysis of RASEF expression in K-562 .



ELISA

Image 3. Detection limit for recombinant GST tagged
RASEF is approximately 0.3ng/ml as a capture antibody.

Please check the [product details page](#) for more images. Overall 4 images are available for ABIN531086.