



[Go to Product page](#)

Datasheet for ABIN531173
anti-CDC20B antibody (AA 1-192)

1 Image

Overview

| | |
|----------------------|---------------------------------------|
| Quantity: | 50 µg |
| Target: | CDC20B |
| Binding Specificity: | AA 1-192 |
| Reactivity: | Human |
| Host: | Mouse |
| Clonality: | Polyclonal |
| Conjugate: | This CDC20B antibody is un-conjugated |
| Application: | Western Blotting (WB) |

Product Details

| | |
|-------------------|--|
| Purpose: | Mouse polyclonal antibody raised against a full-length human CDC20B protein. |
| Immunogen: | CDC20B (AAH37547.1, 1 a.a. ~ 192 a.a) full-length human protein. |
| Sequence: | MEWKLERTAP RRVRTTEEML WVLDSVNATY SDFKSNFAKR LSAEVPVASS PITTRWQQSQ TRALSSDSFG EEQSTTYLPE ASGSVLKTPP EKETLTLGSC KEQLKTPSKG ISETSNSALH FCKAPHAMDR DWKESVASKG QKCLKQLFVT QNVVQQANGK MQLCEQSECV WKDHFSGSMK KRFEQEDVGG KD |
| Cross-Reactivity: | Human |
| Characteristics: | Antibody reactive against mammalian transfected lysate. |

Target Details

| | |
|---------|--------|
| Target: | CDC20B |
|---------|--------|

Target Details

| | |
|-------------------|---|
| Alternative Name: | CDC20B (CDC20B Products) |
| Background: | Full Gene Name: cell division cycle 20 homolog B (S. cerevisiae) Synonyms: FLJ37927,G6VTS76519 |
| Gene ID: | 166979 |

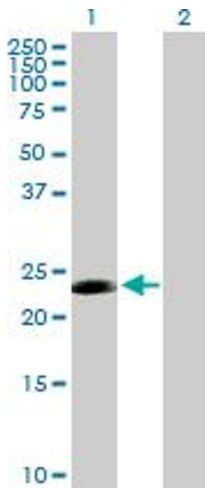
Application Details

| | |
|--------------------|--|
| Application Notes: | Optimal working dilution should be determined by the investigator. |
| Restrictions: | For Research Use only |

Handling

| | |
|------------------|--|
| Buffer: | In 1x PBS, pH 7.4 |
| Handling Advice: | Aliquot to avoid repeated freezing and thawing. |
| Storage: | -20 °C |
| Storage Comment: | Store at -20°C or lower. Aliquot to avoid repeated freezing and thawing. |

Images



Western Blotting

Image 1. Western Blot analysis of CDC20B expression in transfected 293T cell line by CDC20B MaxPab polyclonal antibody.

Lane 1: FLJ37927 transfected lysate(21.12 kDa).

Lane 2: Non-transfected lysate.