



[Go to Product page](#)

Datasheet for ABIN531174
anti-CDC20B antibody (AA 416-515)

4 Images

Overview

Quantity:	100 µg
Target:	CDC20B
Binding Specificity:	AA 416-515
Reactivity:	Human
Host:	Mouse
Clonality:	Monoclonal
Conjugate:	This CDC20B antibody is un-conjugated
Application:	Western Blotting (WB), ELISA, Immunofluorescence (IF)

Product Details

Purpose:	Mouse monoclonal antibody raised against a partial recombinant CDC20B.
Immunogen:	CDC20B (NP_689836.2, 416 a.a. ~ 515 a.a) partial recombinant protein with GST tag. MW of the GST tag alone is 26 KDa.
Sequence:	VLAIGGGMKD GRLHILDINA GKSIQTPSTN SQICSLIWLP KTKEIATGQG TPKNDVTVWT CPTVSRSGHR GRVLHLALSP DQTRVFSAAA DGTASVWNCY
Clone:	2F2
Isotype:	IgG1
Cross-Reactivity:	Human
Characteristics:	Antibody Reactive Against Recombinant Protein.

Target Details

Target:	CDC20B
Alternative Name:	CDC20B (CDC20B Products)
Background:	Full Gene Name: cell division cycle 20 homolog B (<i>S. cerevisiae</i>) Synonyms: FLJ37927,G6VTS76519
Gene ID:	166979
NCBI Accession:	NM_152623

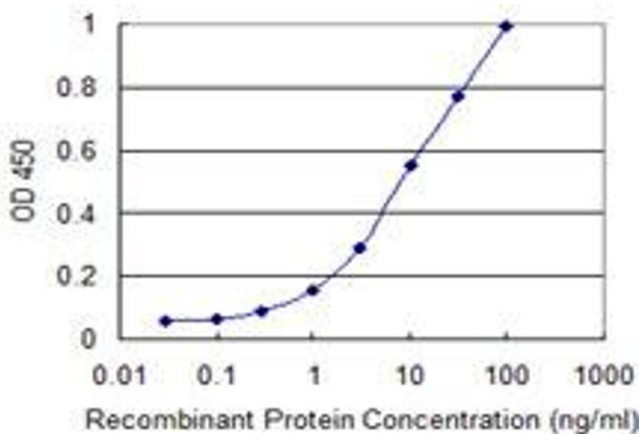
Application Details

Application Notes:	Optimal working dilution should be determined by the investigator.
Restrictions:	For Research Use only

Handling

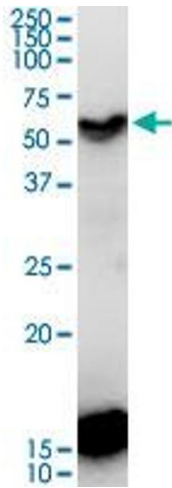
Buffer:	In 1x PBS, pH 7.4
Handling Advice:	Aliquot to avoid repeated freezing and thawing.
Storage:	-20 °C
Storage Comment:	Store at -20°C or lower. Aliquot to avoid repeated freezing and thawing.

Images



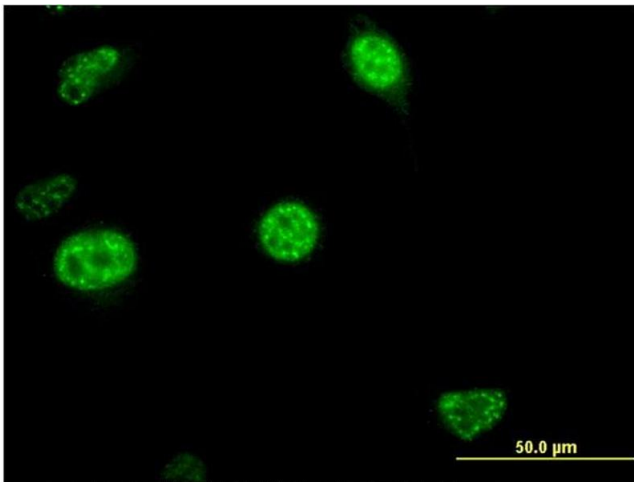
ELISA

Image 1. Detection limit for recombinant GST tagged CDC20B is 0.1 ng/ml as a capture antibody.



Western Blotting

Image 2. CDC20B monoclonal antibody (M11), clone 2F2. Western Blot analysis of CDC20B expression in IMR-32.



Immunofluorescence

Image 3. Immunofluorescence of monoclonal antibody to CDC20B on HeLa cell. [antibody concentration 10 ug/ml]

Please check the [product details page](#) for more images. Overall 4 images are available for ABIN531174.