



[Go to Product page](#)

Datasheet for ABIN531209

## anti-Arx antibody (AA 159-264)

### 2 Images

#### Overview

Quantity:	100 µg
Target:	Arx (ARX)
Binding Specificity:	AA 159-264
Reactivity:	Human
Host:	Mouse
Clonality:	Monoclonal
Conjugate:	This Arx antibody is un-conjugated
Application:	ELISA, Western Blotting (WB)

#### Product Details

Purpose:	Mouse monoclonal antibody raised against a full-length recombinant ARX.
Immunogen:	ARX (NP_620689, 159 a.a. ~ 264 a.a) full-length recombinant protein with GST tag. MW of the GST tag alone is 26 KDa.
Sequence:	LKISQAPQVS ISRSKSYREN GAPFVPPPPA LDELGGPGGV THPEERLGVA GGPGSAPAAG GGTGTEDDEE ELLEDEEDED EEEELLEDEE EELLEDDARA LLKEPR
Clone:	4A8
Isotype:	IgG2b
Cross-Reactivity:	Human
Characteristics:	Antibody Reactive Against Recombinant Protein.

## Target Details

Target:	Arx (ARX)
Alternative Name:	ARX ( <a href="#">ARX Products</a> )
Background:	Full Gene Name: aristaless related homeobox Synonyms: ISSX,MRX29,MRX32,MRX33,MRX36,MRX38,MRX43,MRX54,MRX76,MRX87,MRXS1,PRTS
Gene ID:	170302
NCBI Accession:	<a href="#">NM_139058</a>

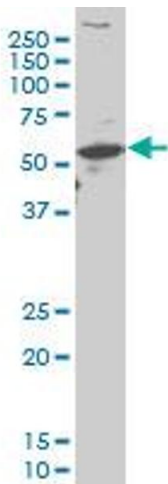
## Application Details

Application Notes:	Optimal working dilution should be determined by the investigator.
Restrictions:	For Research Use only

## Handling

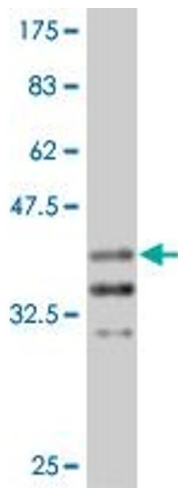
Buffer:	In 1x PBS, pH 7.4
Handling Advice:	Aliquot to avoid repeated freezing and thawing.
Storage:	-20 °C
Storage Comment:	Store at -20°C or lower. Aliquot to avoid repeated freezing and thawing.

## Images



### Western Blotting

**Image 1.** ARX monoclonal antibody (M08), clone 4A8  
Western Blot analysis of ARX expression in SJC1RH30 .



### Western Blotting

**Image 2.** Western Blot detection against Immunogen (37.29 kDa).