



Datasheet for ABIN531232
anti-SDR16C5 antibody (AA 26-309)



[Go to Product page](#)

5 Images

Overview

Quantity:	100 µg
Target:	SDR16C5 (RDHE2)
Binding Specificity:	AA 26-309
Reactivity:	Human
Host:	Mouse
Clonality:	Monoclonal
Conjugate:	This SDR16C5 antibody is un-conjugated
Application:	Western Blotting (WB), ELISA

Product Details

Purpose:	Mouse monoclonal antibody raised against a full length recombinant RDHE2.
Immunogen:	RDHE2 (AAH37219, 26 a.a. ~ 309 a.a) full-length recombinant protein with GST tag. MW of the GST tag alone is 26 KDa.
Sequence:	MIFALLPKPR KNVAGEIVLI TGAGSGLGRL LALQFARLGS VLVLWDINKE GNEETCKMAR EAGATRVHAY TCDCSQKEGV YRVADQVKKE VGDVSILINN AGIVTGKKFL DCPDELMEKS FDVNFKAHLW TYKAFLPAMI ANDHGHLVCI SSSAGLSGVN GLADYCASKF AAFGFAESVF VETFVQKQKG IKTTIVCPFF IKTGMFEGCT TGCPSELLPIL EPKYAVEKIV EAILQEKMVL YMPKLLYFMM FLKSFLPLKT GLLIADYLG I LHAMDFVDQ KKKL
Clone:	3G8
Isotype:	IgG2b
Cross-Reactivity:	Human, Mouse, Rat

Product Details

Characteristics: Antibody Reactive Against Recombinant Protein.

Target Details

Target: SDR16C5 (RDHE2)

Alternative Name: SDR16C5 (RDHE2 Products)

Background: Full Gene Name: short chain dehydrogenase/reductase family 16C, member 5
Synonyms: FLJ33105,RDH#2,RDH-E2,RDHE2

Gene ID: 195814

Application Details

Application Notes: Optimal working dilution should be determined by the investigator.

Restrictions: For Research Use only

Handling

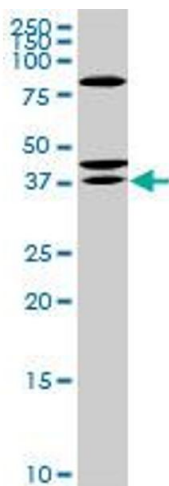
Buffer: In 1x PBS, pH 7.4

Handling Advice: Aliquot to avoid repeated freezing and thawing.

Storage: -20 °C

Storage Comment: Store at -20°C or lower. Aliquot to avoid repeated freezing and thawing.

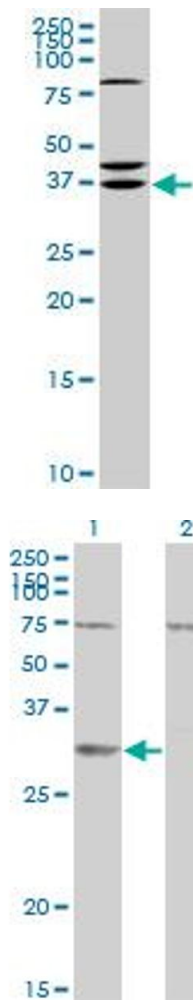
Images



Western Blotting

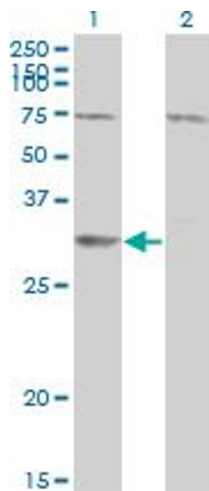
Image 1. RDHE2 monoclonal antibody (M01), clone 3G8.

Western Blot analysis of RDHE2 expression in PC-12 .



Western Blotting

Image 2. RDHE2 monoclonal antibody (M01), clone 3G8.
Western Blot analysis of RDHE2 expression in Raw 264.7 .



Western Blotting

Image 3. Western Blot analysis of SDR16C5 expression in transfected 293T cell line by RDHE2 monoclonal antibody (M01), clone 3G8.

Lane 1: SDR16C5 transfected lysate(34.1 KDa).

Lane 2: Non-transfected lysate.

Please check the [product details page](#) for more images. Overall 5 images are available for ABIN531232.