



[Go to Product page](#)

Datasheet for ABIN531237
anti-ZFC3H1 antibody (AA 1-358)

2 Images

Overview

Quantity:	50 µL
Target:	ZFC3H1
Binding Specificity:	AA 1-358
Reactivity:	Human
Host:	Mouse
Clonality:	Polyclonal
Conjugate:	This ZFC3H1 antibody is un-conjugated
Application:	Western Blotting (WB), Immunofluorescence (IF)

Product Details

Purpose:	Mouse polyclonal antibody raised against a full-length human PSRC2 protein.
Immunogen:	PSRC2 (ENSP00000307825, 1 a.a. ~ 358 a.a) full-length human protein.
Sequence:	MATADTPAPA SSGLSPKEEG ELEDGEISDD DNNSQIRSRSSSSSSGGGLL PYPRRRPPHS ARGGGSGGGG GSSSSSSSSQ QQLRNFSRSR HASERGHLRG PSSYRPKEPF RSHPPSVRMP SSLSSESSPR PSFWERSHLA LDRFRFRGRP YRGGSRWSRG RGVGERGGKP GCRPPLGGGA GSGFSSSQSW REPPPRKSS KSFGRSPSRK QNYSSKNENC VEETFEDLLL KYKQIQLELE CINKDEKLAL SSKEENVQED PKTLNFEDQT STDNVSITKD SSKEVAPEEK TQVKTFQAFE LKPLRQKLTLP GDKNRLKKV KDGAKPLSLK SDTTDSSQGI PYRVKEGFTP IPGLKFSA
Cross-Reactivity:	Human
Characteristics:	Antibody reactive against mammalian transfected lysate.

Target Details

Target:	ZFC3H1
Alternative Name:	ZFC3H1 (ZFC3H1 Products)
Background:	Full Gene Name: zinc finger, C3H1-type containing Synonyms: CCDC131,DKFZp686A0722,KIAA0546,MGC23401,MGC90200,PSRC2
Gene ID:	196441

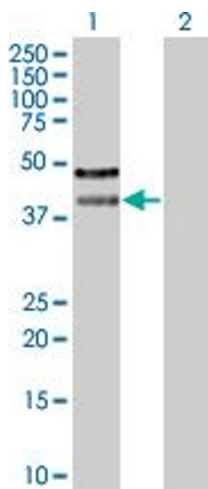
Application Details

Application Notes:	Optimal working dilution should be determined by the investigator.
Restrictions:	For Research Use only

Handling

Format:	Liquid
Buffer:	No additive
Preservative:	Without preservative
Handling Advice:	Aliquot to avoid repeated freezing and thawing.
Storage:	-20 °C
Storage Comment:	Store at -20°C or lower. Aliquot to avoid repeated freezing and thawing.

Images

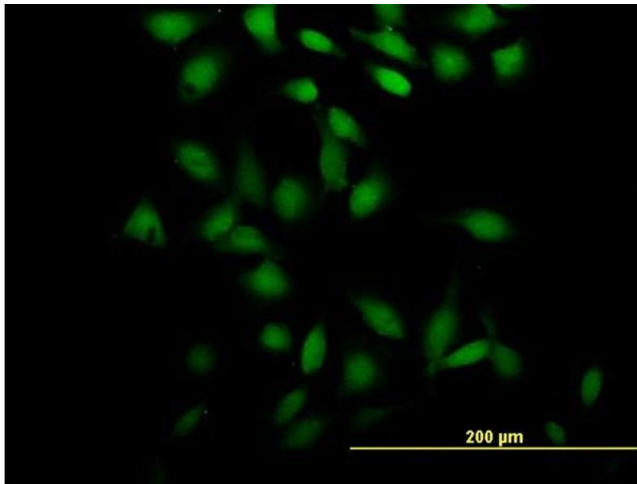


Western Blotting

Image 1. Western Blot analysis of ZFC3H1 expression in transfected 293T cell line by ZFC3H1 MaxPab polyclonal antibody.

Lane 1: PSRC2 transfected lysate(39.38 kDa).

Lane 2: Non-transfected lysate.



Immunofluorescence

Image 2. Immunofluorescence of purified MaxPab antibody to PSRC2 on HeLa cell. [antibody concentration 10 ug/ml]