

Datasheet for ABIN531239
anti-ZFC3H1 antibody (AA 1-358)



[Go to Product page](#)

3 Images

Overview

Quantity:	100 µg
Target:	ZFC3H1
Binding Specificity:	AA 1-358
Reactivity:	Human
Host:	Mouse
Clonality:	Monoclonal
Conjugate:	This ZFC3H1 antibody is un-conjugated
Application:	Western Blotting (WB), ELISA, Immunofluorescence (IF), Immunohistochemistry (Paraffin-embedded Sections) (IHC (p))

Product Details

Purpose:	Mouse monoclonal antibody raised against a full-length recombinant CCDC131.
Immunogen:	CCDC131 (AAH15679.1, 1 a.a. ~ 358 a.a) full-length recombinant protein with GST tag. MW of the GST tag alone is 26 KDa.
Sequence:	MATADTPAPA SSSLSPKEEG ELEDGEISDD DNNSQIRSRS SSSSSGGGLL PYPRRRPPHS ARGGGSGGGG GSSSSSSSSQ QQLRNFSRSR HASERGHRLG PSSYRPKEPF RSHPPSVRMP SSSLSESSPR PSFWERSHLA LDRFRFRGRP YRGGSRWSRG RGVGERGGKP GCRPPLGGGA GSGFSSSQSW REPPPRKSS KSFGRSPSRK QNYSSKNENC VEETFEDLLL KYKIQLELE CINKDEKLAL SSKEENVQED PKTLNFEDQT STDNVSITKD SSKEVAPEEK TQVKTFQAFE LKPLRQKLT L PGDKNRLKKV KDGAKPLSLK SDTTDSSQGI PYRVKEGFTP IPGLKFSA
Clone:	3A3

Product Details

Isotype:	IgG1
Cross-Reactivity:	Human
Characteristics:	Antibody Reactive Against Recombinant Protein.

Target Details

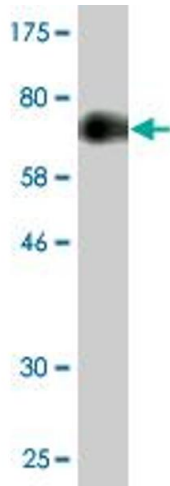
Target:	ZFC3H1
Alternative Name:	ZFC3H1 (ZFC3H1 Products)
Background:	Full Gene Name: zinc finger, C3H1-type containing Synonyms: CCDC131,DKFZp686A0722,KIAA0546,MGC23401,MGC90200,PSRC2
Gene ID:	196441

Application Details

Application Notes:	Optimal working dilution should be determined by the investigator.
Restrictions:	For Research Use only

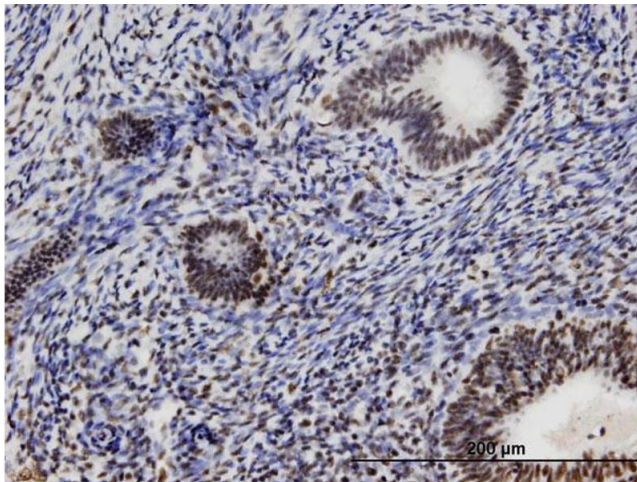
Handling

Buffer:	In 1x PBS, pH 7.4
Handling Advice:	Aliquot to avoid repeated freezing and thawing.
Storage:	-20 °C
Storage Comment:	Store at -20°C or lower. Aliquot to avoid repeated freezing and thawing.



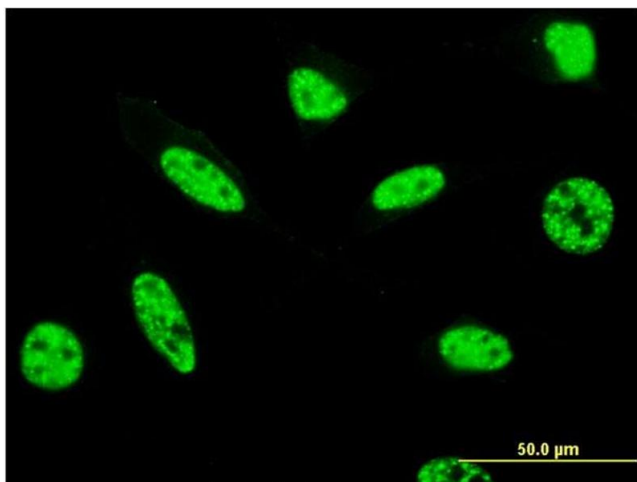
Western Blotting

Image 1. Western Blot detection against Immunogen (65.12 KDa) .



Immunostaining

Image 2. Immunoperoxidase of monoclonal antibody to ZFC3H1 on formalin-fixed paraffin-embedded human endometrium. [antibody concentration 3 ug/ml]



Immunofluorescence

Image 3. Immunofluorescence of monoclonal antibody to ZFC3H1 on HeLa cell. [antibody concentration 10 ug/ml]