



Datasheet for ABIN531243
anti-LCTL antibody (AA 1-567)



[Go to Product page](#)

2 Images

Overview

Quantity:	50 µg
Target:	LCTL
Binding Specificity:	AA 1-567
Reactivity:	Human
Host:	Mouse
Clonality:	Polyclonal
Conjugate:	This LCTL antibody is un-conjugated
Application:	Western Blotting (WB)

Product Details

Purpose:	Mouse polyclonal antibody raised against a full-length human LCTL protein.
Immunogen:	LCTL (AAI52991.1, 1 a.a. ~ 567 a.a) full-length human protein.
Sequence:	<p>MKPVWVATLL WMLLLVPRLG AARKGSPEEA SFYYGTFPLG FSWGVGSSAY QTEGAWDQDG KGPSIWDVFT HSGKGKVLGN ETADVACDGY YKVQEDIILL RELHVNHYRF SLSWPRLLPT GIRAEQVNKK GIEFYSDLID ALLSSNITPI VTLHHWDLPO LLQVKYGGWQ NVSMANYFRD YANLCFEAFG DRVKHWITFS DPRAMAEGY ETGHHAPGLK LRGTGLYKAA HHIKAHAKA WHSYNTTWRS KQQLVIGISL NCDWGEPVDI SNPKDLEAAE RYLQFCLGWF ANPIYAGDYP QVMKDYIGRK SAEQGLEMSR LPVFSLQEKS YIKGTSDFLG LGHFTTRYIT ERNYP SRQGP SYQNDRDLIE LVDPNWPDLG SKWLYSVPWG FRLLNFAQT QYGDPIIYVM ENGASQKFHC TQLCDEWRIQ YLKGYNEML KAIKGANIK GYTSWSLLDK FEWEKGYS DR YGFYYVEFND RNKPRYPKAS VQYYKKIIIA NGFPNPREVE SWYLKALETC SINNQMLAAE PLLSHMQMVT EIVVPTVCSL CVLITAVLLM LLLRRQS</p>

Product Details

Cross-Reactivity:	Human
Characteristics:	Antibody reactive against mammalian transfected lysate.

Target Details

Target:	LCTL
Alternative Name:	LCTL (LCTL Products)
Background:	Full Gene Name: lactase-like Synonyms: FLJ33279,KLG,KLPH
Gene ID:	197021

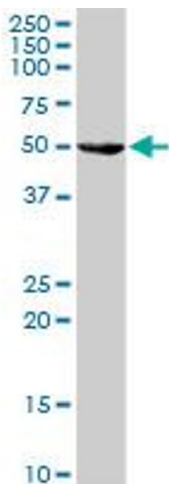
Application Details

Application Notes:	Optimal working dilution should be determined by the investigator.
Restrictions:	For Research Use only

Handling

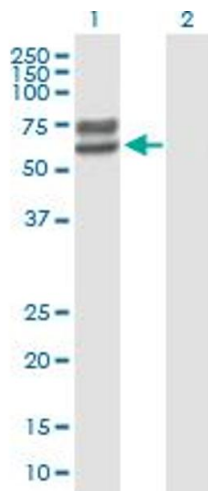
Buffer:	In 1x PBS, pH 7.4
Handling Advice:	Aliquot to avoid repeated freezing and thawing.
Storage:	-20 °C
Storage Comment:	Store at -20°C or lower. Aliquot to avoid repeated freezing and thawing.

Images



Western Blotting

Image 1. LCTL MaxPab polyclonal antibody. Western Blot analysis of LCTL expression in human liver.



Western Blotting

Image 2. Western Blot analysis of LCTL expression in transfected 293T cell line by LCTL MaxPab polyclonal antibody.

Lane 1: LCTL transfected lysate(62.37 KDa).

Lane 2: Non-transfected lysate.