

Datasheet for ABIN531249
anti-MLKL antibody (AA 1-471)



[Go to Product page](#)

3 Images

Overview

Quantity:	50 µg
Target:	MLKL
Binding Specificity:	AA 1-471
Reactivity:	Human
Host:	Mouse
Clonality:	Polyclonal
Conjugate:	This MLKL antibody is un-conjugated
Application:	Western Blotting (WB), Immunofluorescence (IF)

Product Details

Purpose:	Mouse polyclonal antibody raised against a full-length human MLKL protein.
Immunogen:	MLKL (NP_689862.1, 1 a.a. ~ 471 a.a) full-length human protein.
Sequence:	MENLKHIIITL GQVIHKRCEE MKYCKKQCRR LGHRVLGLIK PLEMLQDQGK RSVPSEKLTT AMNRFKAALE EANGEIEKFS NRSNICRFLT ASQDKILFKD VNRKLSDVVK ELSLLLQVEQ RMPVSPISQG ASWAQEDQQD ADEDRRAFQM LRRDNEKIEA SLRRLEINMK EIKETLRQYL PPKCMQEIPQ EQIKEIKKEQ LSGSPWILLR ENEVSTLYKG EYHRAPVAIK VFKKLQAGSI AIVRQTFNKE IKTMKKFESP NILRIFGICI DETVTPPQFS IVMEYCELGT LRELLDREKD LTLGKRMVLV LGAARGLYRL HHSEAPELHG KIRSSNFLVT QGYQVKLAGF ELRKTQTSMS LGTTREKTDR VKSTAYLSPQ ELEDVFYQYD VKSEIYSFGI VLWEIATGDI PFQGCNSEKI RKLVAVKRQQ EPLGEDCPSE LREIDECRA HDPSVRPSVD EILKKLSTFS K
Cross-Reactivity:	Human

Product Details

Characteristics: Antibody reactive against mammalian transfected lysate.

Target Details

Target: MLKL

Alternative Name: MLKL ([MLKL Products](#))

Background: Full Gene Name: mixed lineage kinase domain-like
Synonyms: FLJ34389

Gene ID: 197259

NCBI Accession: [NM_152649](#)

Application Details

Application Notes: Optimal working dilution should be determined by the investigator.

Restrictions: For Research Use only

Handling

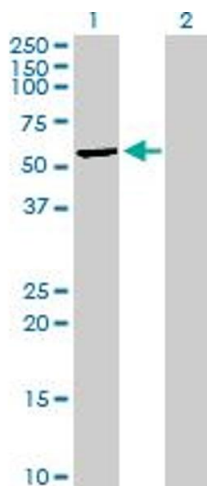
Buffer: In 1x PBS, pH 7.4

Handling Advice: Aliquot to avoid repeated freezing and thawing.

Storage: -20 °C

Storage Comment: Store at -20°C or lower. Aliquot to avoid repeated freezing and thawing.

Images

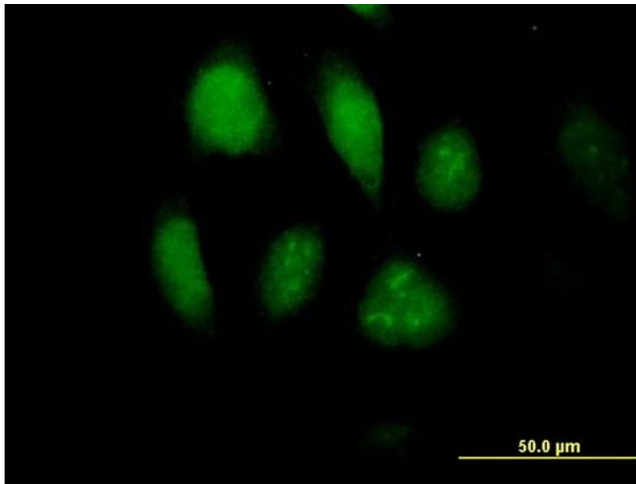


Western Blotting

Image 1. Western Blot analysis of MLKL expression in transfected 293T cell line by MLKL MaxPab polyclonal antibody.

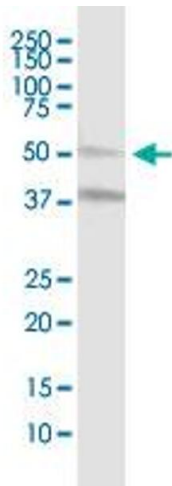
Lane 1: MLKL transfected lysate(51.81 kDa).

Lane 2: Non-transfected lysate.



Immunofluorescence

Image 2. Immunofluorescence of purified MaxPab antibody to MLKL on HeLa cell. [antibody concentration 10 ug/ml]



Western Blotting

Image 3. MLKL MaxPab polyclonal antibody. Western Blot analysis of MLKL expression in HeLa.