



[Go to Product page](#)

Datasheet for ABIN531250
anti-MLKL antibody (AA 371-471)

4 Images

Overview

Quantity:	100 µg
Target:	MLKL
Binding Specificity:	AA 371-471
Reactivity:	Human
Host:	Mouse
Clonality:	Monoclonal
Application:	Western Blotting (WB), ELISA, Immunohistochemistry (Paraffin-embedded Sections) (IHC (p)), Immunofluorescence (IF)

Product Details

Purpose:	Mouse monoclonal antibody raised against a partial recombinant MLKL.
Immunogen:	MLKL (NP_689862, 371 a.a. ~ 471 a.a) partial recombinant protein with GST tag. MW of the GST tag alone is 26 KDa.
Sequence:	VKSTAYLSPQ ELEDVFYQYD VKSEIYSFGI VLWEIATGDI PFQGCNSEKI RKLVAVKRQQ EPLGEDCPSE LREIIDECPA HDPSVRPSVD EILKKLSTFS K
Clone:	3B2
Isotype:	IgG2a
Cross-Reactivity:	Human
Characteristics:	Antibody Reactive Against Recombinant Protein.

Target Details

Target:	MLKL
Alternative Name:	MLKL (MLKL Products)
Background:	Full Gene Name: mixed lineage kinase domain-like Synonyms: FLJ34389
Gene ID:	197259
NCBI Accession:	NM_152649

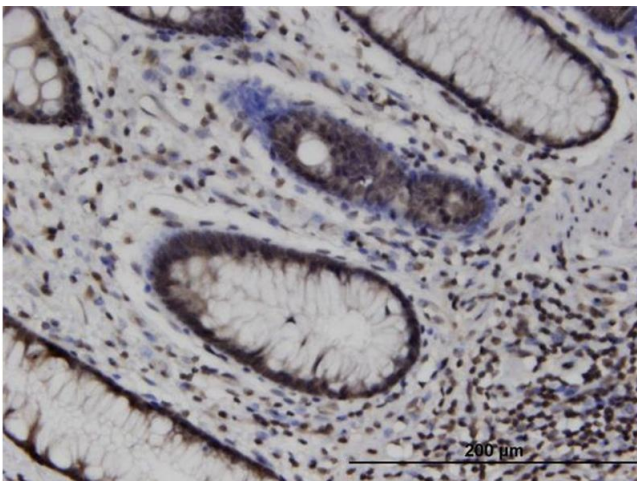
Application Details

Application Notes:	Optimal working dilution should be determined by the investigator.
Restrictions:	For Research Use only

Handling

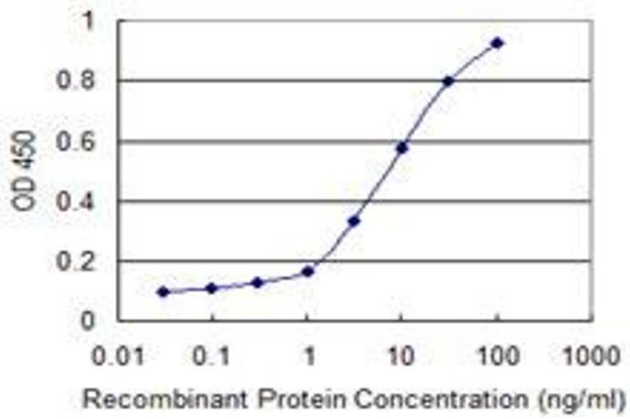
Buffer:	In 1x PBS, pH 7.4
Handling Advice:	Aliquot to avoid repeated freezing and thawing.
Storage:	-20 °C
Storage Comment:	Store at -20°C or lower. Aliquot to avoid repeated freezing and thawing.

Images



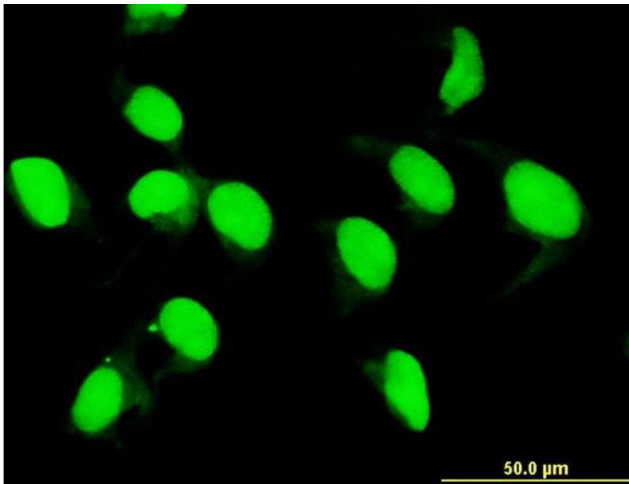
Immunostaining

Image 1. Immunoperoxidase of monoclonal antibody to MLKL on formalin-fixed paraffin-embedded human colon. [antibody concentration 3 ug/ml]



ELISA

Image 2. Detection limit for recombinant GST tagged MLKL is 0.3 ng/ml as a capture antibody.



Immunofluorescence

Image 3. Immunofluorescence of monoclonal antibody to MLKL on HeLa cell. [antibody concentration 10 ug/ml]

Please check the [product details page](#) for more images. Overall 4 images are available for ABIN531250.