



[Go to Product page](#)

Datasheet for ABIN531271

anti-KCTD6 antibody (AA 1-237)

1 Image

Overview

Quantity:	50 µg
Target:	KCTD6
Binding Specificity:	AA 1-237
Reactivity:	Human
Host:	Mouse
Clonality:	Polyclonal
Conjugate:	This KCTD6 antibody is un-conjugated
Application:	Western Blotting (WB)

Product Details

Purpose:	Mouse polyclonal antibody raised against a full-length human KCTD6 protein.
Immunogen:	KCTD6 (AAH22893.2, 1 a.a. ~ 237 a.a) full-length human protein.
Sequence:	MDNGDWGYMM TDPVTLNVGG HLYTTSLTTL TRYPDSMLGA MFGGDFPTAR DPQGNYFIDR DGPLFRYVLN FLRTSELTLP LDFKEFDLLR KEADFYQIEP LIQCLNDPKP LYPMDTFEEV VELSSTRKLS KYSNPVAVII TQLTITTKVH SLLEGISNYF TKWNKHMMMDT RDCQVSFTFG PCDYHQEVSL RVHLMHEYITK QGFTIRNTRV HHMSERANEN TVEHNWTFPCR LARKTDD
Cross-Reactivity:	Human
Characteristics:	Antibody reactive against mammalian transfected lysate.

Target Details

Target:	KCTD6
---------	-------

Target Details

Alternative Name:	KCTD6 (KCTD6 Products)
Background:	Full Gene Name: potassium channel tetramerisation domain containing 6 Synonyms: MGC27385
Gene ID:	200845

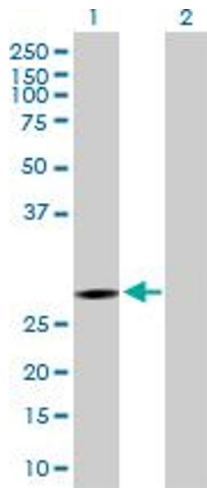
Application Details

Application Notes:	Optimal working dilution should be determined by the investigator.
Restrictions:	For Research Use only

Handling

Buffer:	In 1x PBS, pH 7.4
Handling Advice:	Aliquot to avoid repeated freezing and thawing.
Storage:	-20 °C
Storage Comment:	Store at -20°C or lower. Aliquot to avoid repeated freezing and thawing.

Images



Western Blotting

Image 1. Western Blot analysis of KCTD6 expression in transfected 293T cell line by KCTD6 MaxPab polyclonal antibody.

Lane 1: KCTD6 transfected lysate(26.07 kDa).

Lane 2: Non-transfected lysate.