



[Go to Product page](#)

Datasheet for ABIN531330

## anti-Mrgprf antibody (AA 1-343)

### 1 Image

#### Overview

Quantity:	50 µL
Target:	Mrgprf
Binding Specificity:	AA 1-343
Reactivity:	Human
Host:	Mouse
Clonality:	Polyclonal
Conjugate:	This Mrgprf antibody is un-conjugated
Application:	Western Blotting (WB)

#### Product Details

Purpose:	Mouse polyclonal antibody raised against a full-length human MRGPRF protein.
Immunogen:	MRGPRF (AAH16964, 1 a.a. ~ 343 a.a) full-length human protein.
Sequence:	MAGNCSWEAH PGNRNKMCPG LSEAPELYSR GFLTIEQIAM LPPPAVMNYI FLLLCLCGLV GNGLVLWFFG FSIKRNPFSI YFLHLASADV GYLFSKAVFS ILNTGGFLGT FADYIRSVCR VLGLCMFLTG VSLLPAVSAE RCASVIFPAW YWRRRPKRLS AVVCALLWVL SLLVTCLHNY FCVFLGRGAP GAACRHMDF LGILLFLLCC PLMVLPCAL ILHVECRARR RQRSAKLNHV ILAMVSVFLV SSIYLGIDWF LFWVFQIPAP FPEYVTDLCI CINSSAKPIV YFLAGRDKSQ RLWEPLRVVF QRALRDGAEL GEAGGSTPNT VTMEMQCPPG NAS
Cross-Reactivity:	Human
Characteristics:	Antibody reactive against mammalian transfected lysate.

## Target Details

Target:	Mrgprf
Alternative Name:	MRGPRF ( <a href="#">Mrgprf Products</a> )
Background:	Full Gene Name: MAS-related GPR, member F Synonyms: GPR140,GPR168,MGC21621,RTA,mrgF
Gene ID:	219928

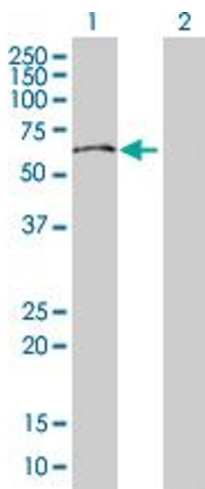
## Application Details

Application Notes:	Optimal working dilution should be determined by the investigator.
Restrictions:	For Research Use only

## Handling

Format:	Liquid
Buffer:	No additive
Preservative:	Without preservative
Handling Advice:	Aliquot to avoid repeated freezing and thawing.
Storage:	-20 °C
Storage Comment:	Store at -20°C or lower. Aliquot to avoid repeated freezing and thawing.

## Images



### Western Blotting

**Image 1.** Western Blot analysis of MRGPRF expression in transfected 293T cell line by MRGPRF MaxPab polyclonal antibody.

Lane 1: MRGPRF transfected lysate(37.84 kDa).

Lane 2: Non-transfected lysate.