



[Go to Product page](#)

Datasheet for ABIN531335  
**anti-MS4A15 antibody (AA 1-147)**

1 Image

Overview

Quantity:	50 µg
Target:	MS4A15
Binding Specificity:	AA 1-147
Reactivity:	Human
Host:	Mouse
Clonality:	Polyclonal
Conjugate:	This MS4A15 antibody is un-conjugated
Application:	Western Blotting (WB)

Product Details

Purpose:	Mouse polyclonal antibody raised against a full-length human MS4A15 protein.
Immunogen:	MS4A15 (NP_689930.1, 1 a.a. ~ 147 a.a) full-length human protein.
Sequence:	MVRRGHVIGIF FIEGGVPPFWG GACFIISGSL SVAAEKNHTS CLVRSSLGTN ILSVMAAFAG TAILLMDFGV TNRDVDRGYL AVLTIFTVLE FFTAVIAMHF GCQAIHAQAS APVIFLPNAF SADFNIPSPA ASAPPAYDNDV AYAQGVV
Cross-Reactivity:	Human
Characteristics:	Antibody reactive against mammalian transfected lysate.

Target Details

Target:	MS4A15
---------	--------

## Target Details

Alternative Name:	MS4A15 ( <a href="#">MS4A15 Products</a> )
Background:	Full Gene Name: membrane-spanning 4-domains, subfamily A, member 15 Synonyms: FLJ34527,MGC35295
Gene ID:	219995
NCBI Accession:	<a href="#">NM_152717</a>

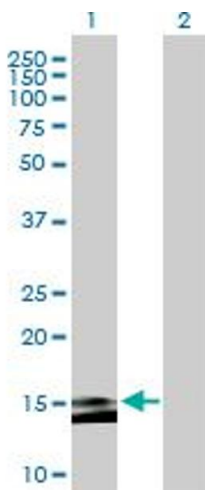
## Application Details

Application Notes:	Optimal working dilution should be determined by the investigator.
Restrictions:	For Research Use only

## Handling

Buffer:	In 1x PBS, pH 7.4
Handling Advice:	Aliquot to avoid repeated freezing and thawing.
Storage:	-20 °C
Storage Comment:	Store at -20°C or lower. Aliquot to avoid repeated freezing and thawing.

## Images



### Western Blotting

**Image 1.** Western Blot analysis of MS4A15 expression in transfected 293T cell line by MS4A15 MaxPab polyclonal antibody.

Lane 1: MGC35295 transfected lysate(16.17 KDa).

Lane 2: Non-transfected lysate.