



[Go to Product page](#)

Datasheet for ABIN531355  
**anti-LRRN4CL antibody (AA 1-238)**

1 Image

Overview

Quantity:	50 µg
Target:	LRRN4CL
Binding Specificity:	AA 1-238
Reactivity:	Human
Host:	Mouse
Clonality:	Polyclonal
Conjugate:	This LRRN4CL antibody is un-conjugated
Application:	Western Blotting (WB)

Product Details

Purpose:	Mouse polyclonal antibody raised against a full-length human LOC221091 protein.
Immunogen:	LOC221091 (NP_981967.1, 1 a.a. ~ 238 a.a) full-length human protein.
Sequence:	MLGSPCLLWL LAVTFLVPRA QPLAPQDFEE EEADDETETAW PPLPAVPCDY DHCRHLQVPC KELQRVGPAA CLCPGLSSPA QPPDPPRMGE VRIAAEEGRA VVHWCAPFSP VLHYWLLLWD GSEAAQKGPP LNATVRRRAEL KGLKPGGIYV VCVVAANEAG ASRVPQAGGE GLEGADIPAF GPCSRLAVPP NPRTLVAHAV GVGTALALLS CAALVWHFCL RDRWGCPRRA AARAAGAL
Cross-Reactivity:	Human
Characteristics:	Antibody reactive against mammalian transfected lysate.

Target Details

Target:	LRRN4CL
---------	---------

## Target Details

Alternative Name:	LRRN4CL ( <a href="#">LRRN4CL Products</a> )
Background:	Full Gene Name: LRRN4 C-terminal like Synonyms: MGC61707
Gene ID:	221091
NCBI Accession:	<a href="#">NM_203422</a>

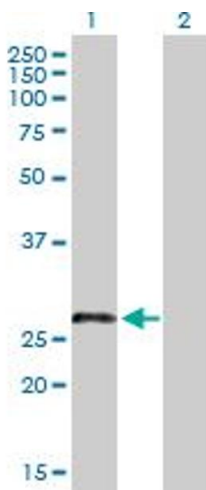
## Application Details

Application Notes:	Optimal working dilution should be determined by the investigator.
Restrictions:	For Research Use only

## Handling

Buffer:	In 1x PBS, pH 7.4
Handling Advice:	Aliquot to avoid repeated freezing and thawing.
Storage:	-20 °C
Storage Comment:	Store at -20°C or lower. Aliquot to avoid repeated freezing and thawing.

## Images



### Western Blotting

**Image 1.** Western Blot analysis of LRRN4CL expression in transfected 293T cell line by LRRN4CL MaxPab polyclonal antibody.

Lane 1: LOC221091 transfected lysate(26.18 KDa).

Lane 2: Non-transfected lysate.