



[Go to Product page](#)

Datasheet for ABIN531365
anti-ZUFSP antibody (AA 1-578)

1 Image

Overview

Quantity:	50 µL
Target:	ZUFSP
Binding Specificity:	AA 1-578
Reactivity:	Human
Host:	Mouse
Clonality:	Polyclonal
Conjugate:	This ZUFSP antibody is un-conjugated
Application:	Western Blotting (WB)

Product Details

Purpose:	Mouse polyclonal antibody raised against a full-length human C6orf113 protein.
Immunogen:	C6orf113 (NP_659499, 1 a.a. ~ 578 a.a) full-length human protein.
Sequence:	MLSCNICGET VTSEPDMAKAH LIVHMESEII CPFCKLSGVN YDEMCFHET AHFEQNTLER NFERINTVQY GTSDNKKDNT LQCGMEVNSS ILSGCASNHP KNSAQNLTKD STLKHEGFYS ENLTESRKFL KSREKQSSLT EIKGSVYETT YSPPECPFCG KIEEHSEDME THVKTKHANL LDIPLDCDQ PLYDCPMCGL ICTNYHILQE HVDLHLEENS FQQGMDRVQC SGDLQLAHQL QQEEDRKRRS EESRQEIEEF QKLQRQYGLD NSGGYKQQQL RNMEIEVNRG RMPPSEFHRR KADMMESLAL GFDDGKTKTS GIIEALHRY YQNAATDVRRV WLSSVVDHFH SSLGDKGWGC GYRNFQMLLS SLLQNDAYDD CLKGMLIPCI PKIQSMIEDA WKEGFDPQGA SQLNNRLQGT KAWIGACEVY ILLTSLRVKC HIVDFHKSTG PLGTHPRLFE WILNYSSEG EGSPKVVCTS KPPIYLQHQG HSRTVIGIEE KKNRTLCLLI LDPGCPSPREM QKLLKQDIEA SSLKQLRKSM GNLKHKQYQI LAVEGALSLE EKLARRQASQ VFTAEEKIP

Product Details

Cross-Reactivity:	Human
Characteristics:	Antibody reactive against mammalian transfected lysate.

Target Details

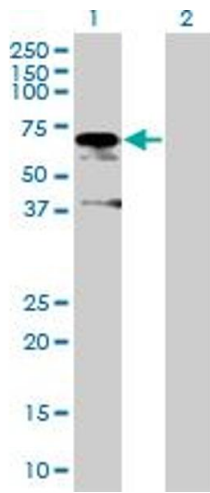
Target:	ZUFSP
Alternative Name:	ZUFSP (ZUFSP Products)
Background:	Full Gene Name: zinc finger with UFM1-specific peptidase domain Synonyms: C6orf113,dJ412I7.3
Gene ID:	221302
NCBI Accession:	NM_145062

Application Details

Application Notes:	Optimal working dilution should be determined by the investigator.
Restrictions:	For Research Use only

Handling

Format:	Liquid
Buffer:	No additive
Preservative:	Without preservative
Handling Advice:	Aliquot to avoid repeated freezing and thawing.
Storage:	-20 °C
Storage Comment:	Store at -20°C or lower. Aliquot to avoid repeated freezing and thawing.



Western Blotting

Image 1. Western Blot analysis of ZUFSP expression in transfected 293T cell line by ZUFSP MaxPab polyclonal antibody.

Lane 1: C6orf113 transfected lysate(63.58 KDa).

Lane 2: Non-transfected lysate.