



[Go to Product page](#)

Datasheet for ABIN531370
anti-KIF6 antibody (AA 1-293)

1 Image

Overview

Quantity:	100 µg
Target:	KIF6
Binding Specificity:	AA 1-293
Reactivity:	Human
Host:	Rabbit
Clonality:	Polyclonal
Conjugate:	This KIF6 antibody is un-conjugated
Application:	Western Blotting (WB)

Product Details

Purpose:	Rabbit polyclonal antibody raised against a full-length human KIF6 protein.
Immunogen:	KIF6 (AAH98418.1, 1 a.a. ~ 293 a.a) full-length human protein.
Sequence:	MREEMSLGCQ EAFEIFKRDH ADSVTIDDNK QILKQRFSEA KALGESINEA RSKIGHLKEE ITQRHIQQVA LGISENMAVP LMPDQQEEKL RSQLEEEKRR YKTMFTRLKA LKVEIEHLQL LMDKAKVKLQ KEFEVWWAEE ATNLQVNSPA VNSLDHTKPF LQTSDSQHER SQLLSNKSSG GWEVQDQGTG RFDVCDVNAR KILPSPCPSP HSQKQSSTST PLEDSIPKRP VSSIPLTGDS QTDSDIIFI KARQSILQKQ YLQLLCSLFP KSAVSSAQAS TNRKGLSDVL VTR
Cross-Reactivity:	Human
Characteristics:	Antibody reactive against mammalian transfected lysate.

Target Details

Target:	KIF6
Alternative Name:	KIF6 (KIF6 Products)
Background:	Full Gene Name: kinesin family member 6 Synonyms: C6orf102,DKFZp451I2418,MGC33317,dJ1043E3.1,dJ137F1.4,dJ188D3.1
Gene ID:	221458

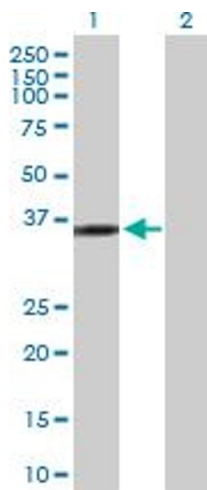
Application Details

Application Notes:	Optimal working dilution should be determined by the investigator.
Restrictions:	For Research Use only

Handling

Buffer:	In 1x PBS, pH 7.4
Handling Advice:	Aliquot to avoid repeated freezing and thawing.
Storage:	-20 °C
Storage Comment:	Store at -20°C or lower. Aliquot to avoid repeated freezing and thawing.

Images



Western Blotting

Image 1. Western Blot analysis of KIF6 expression in transfected 293T cell line by KIF6 MaxPab polyclonal antibody.

Lane 1: KIF6 transfected lysate(33.10 KDa).

Lane 2: Non-transfected lysate.