



[Go to Product page](#)

Datasheet for ABIN531395
anti-SCUBE3 antibody (AA 29-147)

2 Images

Overview

Quantity:	100 µg
Target:	SCUBE3
Binding Specificity:	AA 29-147
Reactivity:	Human
Host:	Mouse
Clonality:	Monoclonal
Conjugate:	This SCUBE3 antibody is un-conjugated
Application:	Western Blotting (WB), ELISA

Product Details

Purpose:	Mouse monoclonal antibody raised against a partial recombinant SCUBE3.
Immunogen:	SCUBE3 (AAH52263.2, 29 a.a. ~ 147 a.a) partial recombinant protein with GST tag. MW of the GST tag alone is 26 KDa.
Sequence:	DVDECVEGTD NCHIDAICQN TPRSFKICK SGYTGDKGKHC KDVDECERED NAGCVHDCVN IPGNYRCTCY DGFHLAHDGH NCLDVDECAE GNGGCQQSCV NMMGSYECHC REGFFLSDN
Clone:	1D6
Isotype:	IgG2a
Cross-Reactivity:	Human
Characteristics:	Antibody Reactive Against Recombinant Protein.

Target Details

Target:	SCUBE3
Alternative Name:	SCUBE3 (SCUBE3 Products)
Background:	Full Gene Name: signal peptide, CUB domain, EGF-like 3 Synonyms: CEGF3,DKFZp686B09105,DKFZp686B1223,DKFZp686D20108,FLJ34743
Gene ID:	222663

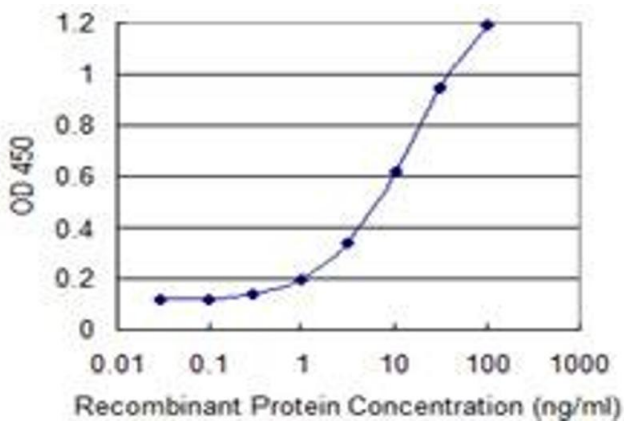
Application Details

Application Notes:	Optimal working dilution should be determined by the investigator.
Restrictions:	For Research Use only

Handling

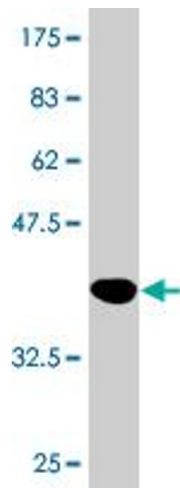
Buffer:	In 1x PBS, pH 7.4
Handling Advice:	Aliquot to avoid repeated freezing and thawing.
Storage:	-20 °C
Storage Comment:	Store at -20°C or lower. Aliquot to avoid repeated freezing and thawing.

Images



ELISA

Image 1. Detection limit for recombinant GST tagged SCUBE3 is 0.1 ng/ml as a capture antibody.



Western Blotting

Image 2. Western Blot detection against Immunogen (38.83 kDa).