



[Go to Product page](#)

Datasheet for ABIN531407

anti-ATP6V1C2 antibody (AA 1-381)

2 Images

Overview

Quantity:	50 µg
Target:	ATP6V1C2
Binding Specificity:	AA 1-381
Reactivity:	Human
Host:	Mouse
Clonality:	Polyclonal
Conjugate:	This ATP6V1C2 antibody is un-conjugated
Application:	Western Blotting (WB)

Product Details

Purpose:	Mouse polyclonal antibody raised against a full-length human ATP6V1C2 protein.
Immunogen:	ATP6V1C2 (AAH12142.1, 1 a.a. ~ 381 a.a) full-length human protein.
Sequence:	MSEFWLISAP GDKENLQALE RMNTVTSKSN LSYNTKFAIP DFKVGTLDL VGLSDELGKL DTFAESLIRR MAQSVVEVME DSKGKVQEHL LANGVDLTSF VTHFEWDMK YPVKQPLVSV VDTIAKQLAQ IEMDLKSRTA AYDTLKTNLE NLEKKSMDNL FRTLSDIVS KEDFVLDSEY LVTLVIVPK PNYSQWQKTY ESLSDMVVPR STKLITDKE GGLFTVTLFR KVIEDFKTKA KENKFTVREF YYDEKEIERE REEMARLLSD KKQYGPPLL WLKVNLFSEAF IAWIHIKALR VFVESVLRYG LPVNFQAVLL QPHKKSSTKR LREVLNSVFR HLDEVAATSI LDASVEIPGL QLNNQDYFPY VYFHIDLSLL D
Cross-Reactivity:	Human
Characteristics:	Antibody reactive against mammalian transfected lysate.

Target Details

Target:	ATP6V1C2
Alternative Name:	ATP6V1C2 (ATP6V1C2 Products)
Background:	Full Gene Name: ATPase, H ⁺ transporting, lysosomal 42 kDa, V1 subunit C2 Synonyms: ATP6C2,VMA5
Gene ID:	245973
Pathways:	Transition Metal Ion Homeostasis , Proton Transport

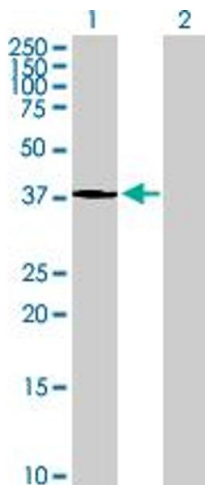
Application Details

Application Notes:	Optimal working dilution should be determined by the investigator.
Restrictions:	For Research Use only

Handling

Buffer:	In 1x PBS, pH 7.4
Handling Advice:	Aliquot to avoid repeated freezing and thawing.
Storage:	-20 °C
Storage Comment:	Store at -20°C or lower. Aliquot to avoid repeated freezing and thawing.

Images

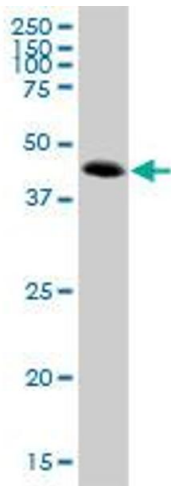


Western Blotting

Image 1. Western Blot analysis of ATP6V1C2 expression in transfected 293T cell line by ATP6V1C2 MaxPab polyclonal antibody.

Lane 1: ATP6V1C2 transfected lysate(41.91 KDa).

Lane 2: Non-transfected lysate.



Western Blotting

Image 2. ATP6V1C2 MaxPab polyclonal antibody. Western Blot analysis of ATP6V1C2 expression in JAR.