



[Go to Product page](#)

Datasheet for ABIN531444
anti-ASPHD1 antibody (AA 1-390)

1 Image

Overview

| | |
|----------------------|---------------------------------------|
| Quantity: | 50 µg |
| Target: | ASPHD1 |
| Binding Specificity: | AA 1-390 |
| Reactivity: | Human |
| Host: | Mouse |
| Clonality: | Polyclonal |
| Conjugate: | This ASPHD1 antibody is un-conjugated |
| Application: | Western Blotting (WB) |

Product Details

| | |
|-------------------|---|
| Purpose: | Mouse polyclonal antibody raised against a full-length human LOC253982 protein. |
| Immunogen: | LOC253982 (NP_859069.2, 1 a.a. ~ 390 a.a) full-length human protein. |
| Sequence: | MKEGRGSFSV ERGPRKERET AQSGMWKGN S PAGESQGAAME GTGGELGGQG NWGPEDAPGL LARASLIMLP WPLPLASSAL TLLFGALTSL FLWYCYRLGS QDMQALGAGS RAGGVRGGPV GCSEAGGPSP GPGDPGEGP RTEGLVSRRL RAYARRYSWA GMGRVRRAAQ GPGPGRGPG VLGIQRPGLL FLPDLPSAPF VPRDAQRH DV ELLESSFPAI LRDFGAVSWD FSGTTPPPRG WSPPLAPGCY QLLLYQAGRC QPSNCRRC PG AYRALRGLRS FMSANTFGNA GFSVLLPGAR LEGRCGPTNA RVRCHLGLKI PPGCELVVG G EPQCWAEGHC LLVDDSFLHT VAHNGSPEDG PRVVFIVDLW HPNVAGAERQ ALDFVFAPDP |
| Cross-Reactivity: | Human |
| Characteristics: | Antibody reactive against mammalian transfected lysate. |

Target Details

| | |
|-------------------|---|
| Target: | ASPHD1 |
| Alternative Name: | ASPHD1 (ASPHD1 Products) |
| Background: | Full Gene Name: aspartate beta-hydroxylase domain containing 1 Synonyms: |
| Gene ID: | 253982 |
| NCBI Accession: | NM_181718 |

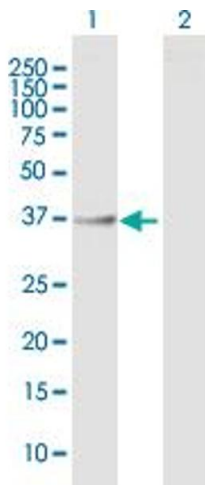
Application Details

| | |
|--------------------|--|
| Application Notes: | Optimal working dilution should be determined by the investigator. |
| Restrictions: | For Research Use only |

Handling

| | |
|------------------|--|
| Buffer: | In 1x PBS, pH 7.4 |
| Handling Advice: | Aliquot to avoid repeated freezing and thawing. |
| Storage: | -20 °C |
| Storage Comment: | Store at -20°C or lower. Aliquot to avoid repeated freezing and thawing. |

Images



Western Blotting

Image 1. Western Blot analysis of ASPHD1 expression in transfected 293T cell line by ASPHD1 MaxPab polyclonal antibody.

Lane 1: LOC253982 transfected lysate(42.9 KDa).

Lane 2: Non-transfected lysate.