



[Go to Product page](#)

Datasheet for ABIN531457
anti-LYG2 antibody (AA 1-212)

1 Image

Overview

Quantity:	50 µg
Target:	LYG2
Binding Specificity:	AA 1-212
Reactivity:	Human
Host:	Mouse
Clonality:	Polyclonal
Conjugate:	This LYG2 antibody is un-conjugated
Application:	Western Blotting (WB)

Product Details

Purpose:	Mouse polyclonal antibody raised against a full-length human LYG2 protein.
Immunogen:	LYG2 (NP_783862.2, 1 a.a. ~ 212 a.a) full-length human protein.
Sequence:	MLSSVFWGL IALIGTSRGS YPFSHSMKPH LHPRLYHGCV GDIMTMKTSG ATCDANSVMN CGIRGSEMFA EMDLRAIKPY QTLIKEVGQR HCVDPAVIAA IISRESHGGS VLQDGWDHRG LKFGMLQLDK QTYHPVGAWD SKEHLSQATG ILTERIKAIQ KKFPTWSVAQ HLKGGLSAFK SGIEAIATPS DIDNDFVNDI IARAKFYKRQ SF
Cross-Reactivity:	Human
Characteristics:	Antibody reactive against mammalian transfected lysate.

Target Details

Target:	LYG2
---------	------

Target Details

Alternative Name:	LYG2 (LYG2 Products)
Background:	Full Gene Name: lysozyme G-like 2 Synonyms: LYGH,MGC119046,MGC119047,MGC119049
Gene ID:	254773
NCBI Accession:	NM_175735

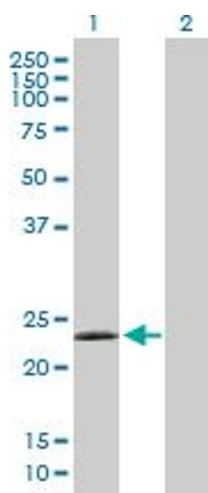
Application Details

Application Notes:	Optimal working dilution should be determined by the investigator.
Restrictions:	For Research Use only

Handling

Buffer:	In 1x PBS, pH 7.4
Handling Advice:	Aliquot to avoid repeated freezing and thawing.
Storage:	-20 °C
Storage Comment:	Store at -20°C or lower. Aliquot to avoid repeated freezing and thawing.

Images



Western Blotting

Image 1. Western Blot analysis of LYG2 expression in transfected 293T cell line by LYG2 MaxPab polyclonal antibody.

Lane1:LYG2 transfected lysate(23.32 KDa).

Lane2:Non-transfected lysate.