



[Go to Product page](#)

Datasheet for ABIN531462

## anti-CCDC108 antibody (AA 1-271)

### 1 Image

#### Overview

Quantity:	50 µg
Target:	CCDC108
Binding Specificity:	AA 1-271
Reactivity:	Human
Host:	Mouse
Clonality:	Polyclonal
Conjugate:	This CCDC108 antibody is un-conjugated
Application:	Western Blotting (WB)

#### Product Details

Purpose:	Mouse polyclonal antibody raised against a full-length human CCDC108 protein.
Immunogen:	CCDC108 (AAH47637.1, 1 a.a. ~ 271 a.a) full-length human protein.
Sequence:	MTLHCAFQPT HPIICFRRVA CLIHHQDPLF LDLMGTCHSD STKPAILKPQ HLTWYRTHLA RGLTLYPPDI LDAMLKEKKL AQDQNGALMI PIQDLEDMPA PQYPYIPPMTE EFFFDTGSDI TIFPPPIISVE PVEVDFGACP GPEAPNPVPL CLMNHTKGKI MVVWTRRSDC PFWVTPESCD VPPLKSMAMR LHFQPPHPNC LYTVELEAFA IYKVCARNER EECGVSARSLSGLVGWQEVTE EGSFRLHPLR ARLSLGWTVT PMSLSPPKLL A
Cross-Reactivity:	Human
Characteristics:	Antibody reactive against mammalian transfected lysate.

## Target Details

Target:	CCDC108
Alternative Name:	CCDC108 ( <a href="#">CCDC108 Products</a> )
Background:	Full Gene Name: coiled-coil domain containing 108 Synonyms: DKFZp43400527,MGC35338
Gene ID:	255101

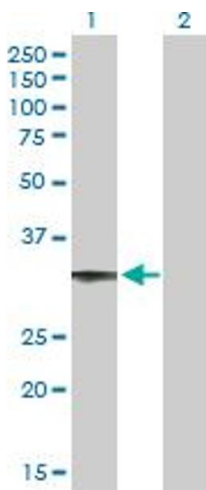
## Application Details

Application Notes:	Optimal working dilution should be determined by the investigator.
Restrictions:	For Research Use only

## Handling

Buffer:	In 1x PBS, pH 7.4
Handling Advice:	Aliquot to avoid repeated freezing and thawing.
Storage:	-20 °C
Storage Comment:	Store at -20°C or lower. Aliquot to avoid repeated freezing and thawing.

## Images



### Western Blotting

**Image 1.** Western Blot analysis of CCDC108 expression in transfected 293T cell line by CCDC108 MaxPab polyclonal antibody.

Lane 1: DKFZp43400527 transfected lysate(29.81 KDa).

Lane 2: Non-transfected lysate.