



[Go to Product page](#)

Datasheet for ABIN531481

anti-LYSMD2 antibody (AA 1-215)

2 Images

Overview

Quantity:	50 µg
Target:	LYSMD2
Binding Specificity:	AA 1-215
Reactivity:	Human
Host:	Mouse
Clonality:	Polyclonal
Conjugate:	This LYSMD2 antibody is un-conjugated
Application:	Western Blotting (WB)

Product Details

Purpose:	Mouse polyclonal antibody raised against a full-length human LYSMD2 protein.
Immunogen:	LYSMD2 (NP_699205, 1 a.a. ~ 215 a.a) full-length human protein.
Sequence:	MADSSPALS L REGGPRAPRP SAPSPPPRSR SGSESEEAE L SLSLARTKTR SYGSTASVRA PLGAGVIERH VEHRVRAGDT LQGIALKYGV TMEQIKRANK LFTNDCIFLK KTLNIPVISE KPLLFNGLNS IDSPENETAD NSFSQEEEPV VAGEDLPPPS PQESDVQPVQ PEEVSARDFL QRLDLQIKLS TQAAKKLKEE SRDEESPYAT SLYHS
Cross-Reactivity:	Human, Rat
Characteristics:	Antibody reactive against mammalian transfected lysate.

Target Details

Target:	LYSMD2
---------	--------

Target Details

Alternative Name:	LYSMD2 (LYSMD2 Products)
Background:	Full Gene Name: LysM, putative peptidoglycan-binding, domain containing 2 Synonyms: DKFZp686l2243,MGC35274
Gene ID:	256586
NCBI Accession:	NM_153374

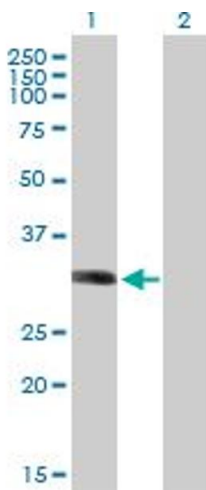
Application Details

Application Notes:	Optimal working dilution should be determined by the investigator.
Restrictions:	For Research Use only

Handling

Buffer:	In 1x PBS, pH 7.4
Handling Advice:	Aliquot to avoid repeated freezing and thawing.
Storage:	-20 °C
Storage Comment:	Store at -20°C or lower. Aliquot to avoid repeated freezing and thawing.

Images

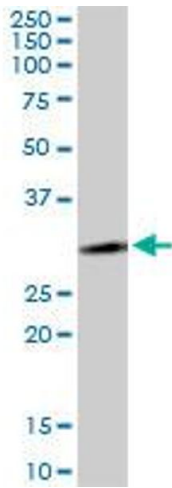


Western Blotting

Image 1. Western Blot analysis of LYSMD2 expression in transfected 293T cell line by LYSMD2 MaxPab polyclonal antibody.

Lane 1: LYSMD2 transfected lysate(23.65 KDa).

Lane 2: Non-transfected lysate.



Western Blotting

Image 2. LYSMD2 MaxPab polyclonal antibody. Western Blot analysis of LYSMD2 expression in rat brain.