



[Go to Product page](#)

Datasheet for ABIN531483
anti-GLIPR1L1 antibody (AA 1-233)

3 Images

Overview

| | |
|----------------------|--|
| Quantity: | 50 µg |
| Target: | GLIPR1L1 |
| Binding Specificity: | AA 1-233 |
| Reactivity: | Human |
| Host: | Mouse |
| Clonality: | Polyclonal |
| Conjugate: | This GLIPR1L1 antibody is un-conjugated |
| Application: | Western Blotting (WB), Flow Cytometry (FACS) |

Product Details

| | |
|-------------------|---|
| Purpose: | Mouse polyclonal antibody raised against a full-length human GLIPR1L1 protein. |
| Immunogen: | GLIPR1L1 (NP_689992.1, 1 a.a. ~ 233 a.a) full-length human protein. |
| Sequence: | MALKNKFSCLEWILGLCLVAT TSSKIPSITD PHFIDNCIEA HNEWRGKVNP PAADMKYMIW DKGLAKMAKA WANQCKFEHN DCLDKSYKCY AAFEYVGENI WLGGIKSFTP RHAITAWYNE TQFYDFDSLS CSRVCGHYTQ LVWANSFYVG CAVAMCPNLG GASTAIFVCN YGPAGNFANM PPYVRGESCS LCSKEEKCVK NLCKNPFLKP TGRAPQQTAF NPFSLGFLLL RIF |
| Cross-Reactivity: | Human |
| Characteristics: | Antibody reactive against mammalian transfected lysate. |

Target Details

| | |
|---------|----------|
| Target: | GLIPR1L1 |
|---------|----------|

Target Details

| | |
|-------------------|--|
| Alternative Name: | GLIPR1L1 (GLIPR1L1 Products) |
| Background: | Full Gene Name: GLI pathogenesis-related 1 like 1 Synonyms: ALKN2972,MGC26856,PRO7434 |
| Gene ID: | 256710 |
| NCBI Accession: | NM_152779 |

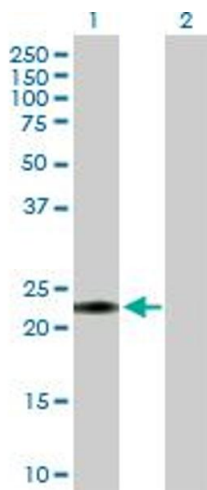
Application Details

| | |
|--------------------|--|
| Application Notes: | Optimal working dilution should be determined by the investigator. |
| Restrictions: | For Research Use only |

Handling

| | |
|------------------|--|
| Buffer: | In 1x PBS, pH 7.4 |
| Handling Advice: | Aliquot to avoid repeated freezing and thawing. |
| Storage: | -20 °C |
| Storage Comment: | Store at -20°C or lower. Aliquot to avoid repeated freezing and thawing. |

Images

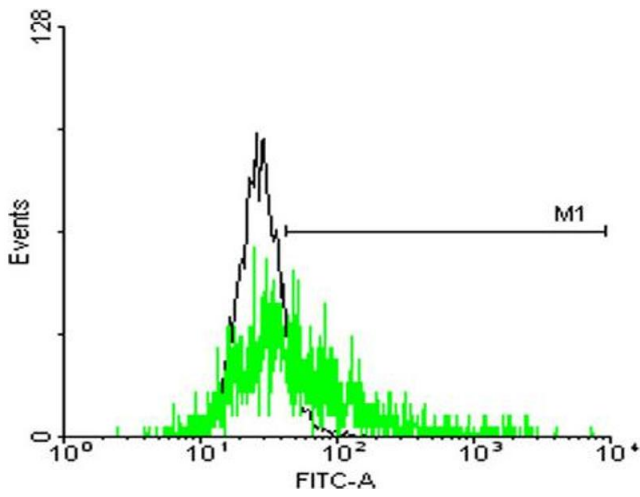


Western Blotting

Image 1. Western Blot analysis of GLIPR1L1 expression in transfected 293T cell line by GLIPR1L1 MaxPab polyclonal antibody.

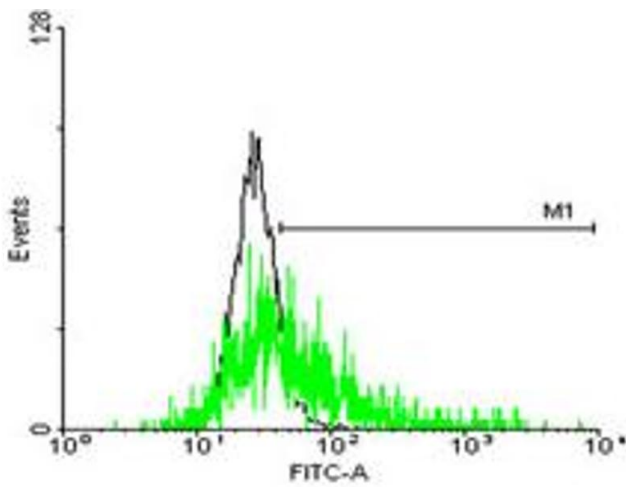
Lane 1: MGC26856 transfected lysate(25.63 KDa).

Lane 2: Non-transfected lysate.



Flow Cytometry

Image 2. FACS analysis of negative control 293 cells (Black) and GLIPR1L1 expressing 293 cells (Green) using GLIPR1L1 purified MaxPab mouse polyclonal antibody.



Flow Cytometry

Image 3. FACS analysis of negative control 293 cells (Black) and GLIPR1L1 expressing 293 cells (Green) using GLIPR1L1 purified MaxPab mouse polyclonal antibody.