

Datasheet for ABIN531502
anti-TAS2R20 antibody (AA 1-309)



[Go to Product page](#)

1 Image

Overview

Quantity:	100 µg
Target:	TAS2R20
Binding Specificity:	AA 1-309
Reactivity:	Human
Host:	Rabbit
Clonality:	Polyclonal
Conjugate:	This TAS2R20 antibody is un-conjugated
Application:	Western Blotting (WB)

Product Details

Purpose:	Rabbit polyclonal antibody raised against a full-length human TAS2R49 protein.
Immunogen:	TAS2R49 (AAI00918.1, 1 a.a. ~ 309 a.a) full-length human protein.
Sequence:	MMSFLHIVFS ILVVVAFILG NFANGFIALI NFIWVKRQK ISSADQIIAA LAVSRVGLLW VILLHWYSTV LNPTSSNLKV IIFISNAWAV TNHFSIWLAT SLSIFYLLKI VNFSRLIFHH LKRKAKSVVL VIVLGSFLFL ICQLVMKNTY INVWTEECEG NVTWKIKLRN AMHLSNLTVA MLANLIPFTL TLISFLLLIY SLCKHLKMQ LHGKGSQDPS TKIHIKALQT VTSFLVLLAI YFLCLIISFW NSKMLPKEIV LMLCQAFGII YPSFHSFILI WGNKTLKQTF LSVLWQVTCW AKGQNQSTP
Cross-Reactivity:	Human
Characteristics:	Antibody reactive against mammalian transfected lysate.

Target Details

Target:	TAS2R20
Alternative Name:	TAS2R49 (TAS2R20 Products)
Background:	Full Gene Name: taste receptor, type 2, member 49 Synonyms: MGC119118,MGC119119,MGC119120,MGC119121,MGC134637,T2R49,T2R56
Gene ID:	259295

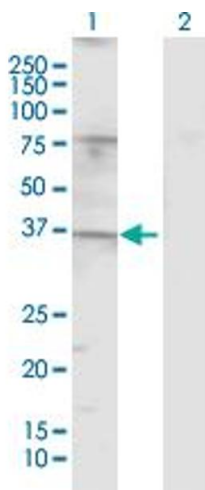
Application Details

Application Notes:	Optimal working dilution should be determined by the investigator.
Restrictions:	For Research Use only

Handling

Buffer:	In 1x PBS, pH 7.4
Handling Advice:	Aliquot to avoid repeated freezing and thawing.
Storage:	-20 °C
Storage Comment:	Store at -20°C or lower. Aliquot to avoid repeated freezing and thawing.

Images



Western Blotting

Image 1. Western Blot analysis of TAS2R49 expression in transfected 293T cell line by TAS2R49 MaxPab polyclonal antibody.

Lane 1: TAS2R49 transfected lysate(35.20 KDa).

Lane 2: Non-transfected lysate.