



[Go to Product page](#)

Datasheet for ABIN531525
anti-SLC39A5 antibody (AA 1-539)

1 Image

Overview

Quantity:	50 µg
Target:	SLC39A5
Binding Specificity:	AA 1-539
Reactivity:	Human
Host:	Mouse
Clonality:	Polyclonal
Conjugate:	This SLC39A5 antibody is un-conjugated
Application:	Western Blotting (WB)

Product Details

Purpose:	Mouse polyclonal antibody raised against a full-length human SLC39A5 protein.
Immunogen:	SLC39A5 (NP_775867, 1 a.a. ~ 539 a.a) full-length human protein.
Sequence:	MGSPVSHLLA GFCVWVVLGW VGGSVPNLGP AEQEQNHLYA QLFGLYGENG TLTAGGLARL LHSLGLGRVQ GLRLGQHGPL TGRAASPAAD NSTHRPQNPE LSVDVWAGMP LGPSGWGDLE ESKAPHLPRG PAPSGLDLLH RLLLLDHSLA DHLNEDCLNG SQLLVNFGLS PAAPLTPRQF ALLCPALLYQ IDSRVCIGAP APAPPGDLLS ALLQSALAVL LLSLPSPLSL LLLRLLGPRL LRPLLGFLLGA LAVGTLCGDA LLHLLPHAQE GRHAGPGGLP EKDLGPGLSV LGGLFLLFVL ENMLGLLRHR GLRPRCCRK RRNLETRNLD PENGSGMALQ PLQAAPEPGA QGQREKNSQH PPALAPPGHQ GHSHGHQGGT DITWMVLLGD GLHNLTGDLA IGAAFSDGFS SGLSTTLAVF CHELPHLGD FAMILLSGLS FRRLLLLSLV SGALGLGGAV LGVGLSLGPV PLTPWVFGVT AGVFLYVALV DMLPALLRPP EPLPTPHVLL QGLGLLLGGG LMLAITLLEE RLLPVTTTEG

Product Details

Cross-Reactivity:	Human
Characteristics:	Antibody reactive against mammalian transfected lysate.

Target Details

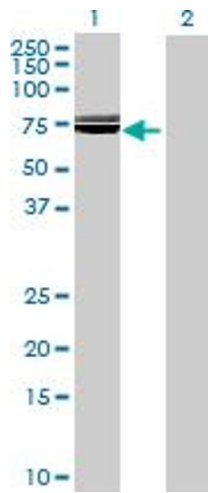
Target:	SLC39A5
Alternative Name:	SLC39A5 (SLC39A5 Products)
Background:	Full Gene Name: solute carrier family 39 (metal ion transporter), member 5 Synonyms: LZT-Hs7,MGC34778,ZIP5
Gene ID:	283375
NCBI Accession:	NM_173596
Pathways:	Transition Metal Ion Homeostasis

Application Details

Application Notes:	Optimal working dilution should be determined by the investigator.
Restrictions:	For Research Use only

Handling

Buffer:	In 1x PBS, pH 7.4
Handling Advice:	Aliquot to avoid repeated freezing and thawing.
Storage:	-20 °C
Storage Comment:	Store at -20°C or lower. Aliquot to avoid repeated freezing and thawing.



Western Blotting

Image 1. Western Blot analysis of SLC39A5 expression in transfected 293T cell line by SLC39A5 MaxPab polyclonal antibody.

Lane 1: SLC39A5 transfected lysate(59.29 KDa).

Lane 2: Non-transfected lysate.