



[Go to Product page](#)

Datasheet for ABIN531526

anti-CLEC9A antibody (AA 1-241)

1 Image

Overview

Quantity:	50 µg
Target:	CLEC9A
Binding Specificity:	AA 1-241
Reactivity:	Human
Host:	Mouse
Clonality:	Polyclonal
Conjugate:	This CLEC9A antibody is un-conjugated
Application:	Western Blotting (WB)

Product Details

Purpose:	Mouse polyclonal antibody raised against a full-length human CLEC9A protein.
Immunogen:	CLEC9A (NP_997228.1, 1 a.a. ~ 241 a.a) full-length human protein.
Sequence:	MHEEEIYTSL QWDSPAPDTY QKCLSSNKCS GACCLVMVIS CVFCMGLLTA SIFLGVKLLQ VSTIAMQQQE KLIQERALL NFTEWKRSCA LQMKYCQAFM QNSLSSAHNS SPCPNNWIQN RESCYYVSEI WSIWHTSQEN CLKEGSTLLQ IESKEEMDFI TGSLRKIKGS YDYWVGLSQD GHSGRWLWQD GSSPSPGLLP AERSQSANQV CGYVKNSLL SSNCSTWKYF ICEKYALRSS V
Cross-Reactivity:	Human
Characteristics:	Antibody reactive against mammalian transfected lysate.

Target Details

Target:	CLEC9A
---------	--------

Target Details

Alternative Name:	CLEC9A (CLEC9A Products)
Background:	Full Gene Name: C-type lectin domain family 9, member A Synonyms: DNGR1, UNQ9341
Gene ID:	283420
NCBI Accession:	NM_207345

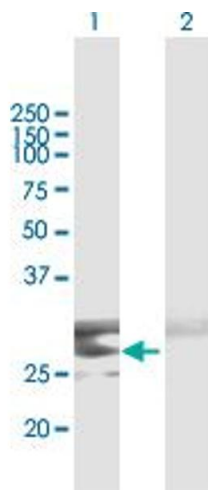
Application Details

Application Notes:	Optimal working dilution should be determined by the investigator.
Restrictions:	For Research Use only

Handling

Buffer:	In 1x PBS, pH 7.4
Handling Advice:	Aliquot to avoid repeated freezing and thawing.
Storage:	-20 °C
Storage Comment:	Store at -20°C or lower. Aliquot to avoid repeated freezing and thawing.

Images



Western Blotting

Image 1. Western Blot analysis of CLEC9A expression in transfected 293T cell line by CLEC9A MaxPab polyclonal antibody.

Lane 1: CLEC9A transfected lysate(26.51 KDa).

Lane 2: Non-transfected lysate.