



[Go to Product page](#)

Datasheet for ABIN531532

anti-C12orf40 antibody (AA 1-422)

1 Image

Overview

Quantity:	50 µg
Target:	C12orf40
Binding Specificity:	AA 1-422
Reactivity:	Human
Host:	Mouse
Clonality:	Polyclonal
Conjugate:	This C12orf40 antibody is un-conjugated
Application:	Western Blotting (WB)

Product Details

Purpose:	Mouse polyclonal antibody raised against a full-length human C12orf40 protein.
Immunogen:	C12orf40 (AAH38754.2, 1 a.a. ~ 422 a.a) full-length human protein.
Sequence:	MVNQISCKKK IPETVRKPTH VNMNRDIKMP LRKHNLELTM SPHCVPSKLC LDDTETNVNC QRLSSKEDLG PVQSQGMSY SMLHPQFSKI ENCSFTPSSF SVELPSNRHI SKLNFTSGIA PTPQKLAYEK QNDQQRSTVN CSDSLLSKLN KSQDVFSPSH KTTRFGTLFE RLNSLGNRNL LTKSPAVIMD EDCRSTDEIR QSDYITEKHS IQHIWGKNGK EVSNFLEDVN QSTPNLLSEN CDSFVSQNM I NVLNIDEQRI KKT FNKCDYD SMGDT CVVTS SDKNHVTDRC IRNIFTVPEL TFSNSTLNKT SYPEKCQPNK KYQREYNKNE RNDLSTSFEN DYYPSSSERK EK FENDYQEK TPQKSIQKYP ANSMGNIPSE ELHSKQSWDF GLDEILMEEG GIYSLKSKRI STKKICQYNC IS
Cross-Reactivity:	Human
Characteristics:	Antibody reactive against mammalian transfected lysate.

Target Details

Target:	C12orf40
Alternative Name:	C12orf40 (C12orf40 Products)
Background:	Full Gene Name: chromosome 12 open reading frame 40 Synonyms: FLJ40126
Gene ID:	283461

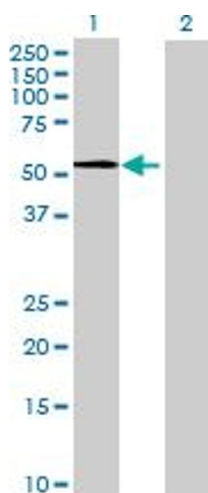
Application Details

Application Notes:	Optimal working dilution should be determined by the investigator.
Restrictions:	For Research Use only

Handling

Buffer:	In 1x PBS, pH 7.4
Handling Advice:	Aliquot to avoid repeated freezing and thawing.
Storage:	-20 °C
Storage Comment:	Store at -20°C or lower. Aliquot to avoid repeated freezing and thawing.

Images



Western Blotting

Image 1. Western Blot analysis of C12orf40 expression in transfected 293T cell line by C12orf40 MaxPab polyclonal antibody.

Lane 1: C12orf40 transfected lysate(46.42 KDa).

Lane 2: Non-transfected lysate.