

Datasheet for ABIN531551
anti-PTRF antibody (AA 1-390)



[Go to Product page](#)

2 Images

Overview

Quantity:	50 µg
Target:	PTRF
Binding Specificity:	AA 1-390
Reactivity:	Human
Host:	Mouse
Clonality:	Polyclonal
Conjugate:	This PTRF antibody is un-conjugated
Application:	Western Blotting (WB)

Product Details

Purpose:	Mouse polyclonal antibody raised against a full-length human PTRF protein.
Immunogen:	PTRF (NP_036364.2, 1 a.a. ~ 390 a.a) full-length human protein.
Sequence:	MEDPTLYIVE RPLPGYPDAE APEPSSAGAQ AAEEPSGAGS EELIKSDQVN GVLVLSLLDK IIGAVDQIQL TQAQLEERQA EMEGAVQSIQ GELSKLGKAH ATTSNTVSKL LEKVRKVSVN VKTVRGSLEK QAGQIKKLEV NEAELLRRRN FKVMYQDEV KLPKLSISK SLKESEALPE KEGEELGEGE RPEEDAAALE LSSDEAVEVE EVIEESRAER IKRSGLRDVD DFKKAFSKEK MEKTKVRTRE NLEKTRLKTK ENLEKTRHTL EKRMNKLGTR LVPAERREKL KTSRDKLRKS FTPDHVYAR SKTAVYKVPP FTFHVKKIRE GQVEVLKATE MVEVGADDDE GGAERGEAGD LRRGSSPDVH ALLEITEESD AVLVDKSDSD
Cross-Reactivity:	Human
Characteristics:	Antibody reactive against mammalian transfected lysate.

Target Details

Target:	PTRF
Alternative Name:	PTRF (PTRF Products)
Background:	Full Gene Name: polymerase I and transcript release factor Synonyms: FKSG13
Gene ID:	284119
NCBI Accession:	NM_012232

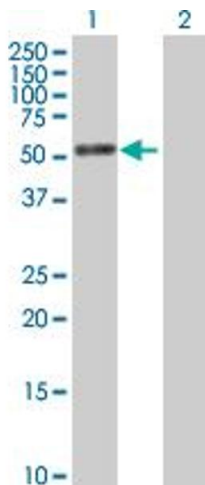
Application Details

Application Notes:	Optimal working dilution should be determined by the investigator.
Restrictions:	For Research Use only

Handling

Buffer:	In 1x PBS, pH 7.4
Handling Advice:	Aliquot to avoid repeated freezing and thawing.
Storage:	-20 °C
Storage Comment:	Store at -20°C or lower. Aliquot to avoid repeated freezing and thawing.

Images

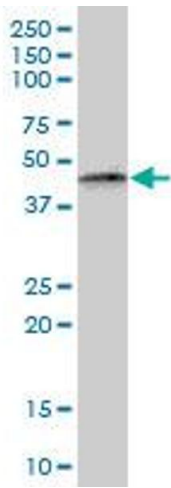


Western Blotting

Image 1. Western Blot analysis of PTRF expression in transfected 293T cell line by PTRF MaxPab polyclonal antibody.

Lane 1: PTRF transfected lysate(42.9 kDa).

Lane 2: Non-transfected lysate.



Western Blotting

Image 2. PTRF MaxPab polyclonal antibody. Western Blot analysis of PTRF expression in human spleen.