



[Go to Product page](#)

Datasheet for ABIN531581

## anti-RABL3 antibody (AA 1-236)

### 1 Image

#### Overview

Quantity:	50 µL
Target:	RABL3
Binding Specificity:	AA 1-236
Reactivity:	Human
Host:	Mouse
Clonality:	Polyclonal
Conjugate:	This RABL3 antibody is un-conjugated
Application:	Western Blotting (WB), ELISA

#### Product Details

Purpose:	Mouse polyclonal antibody raised against a full-length recombinant RABL3.
Immunogen:	RABL3 (AAH20832, 1 a.a. ~ 236 a.a) full-length recombinant protein with GST tag.
Sequence:	MASLDRVKVL VLGDSGVGKS SLVHLLCQNQ VLGNPSWTVG CSVDVRVHDY KEGTPEEKTC YIELWDVGGG VGSASSVKST RAVFYNSVNG IIFVHDLTNK KSSQNLRRWS LEALNRDLVP TGVLV TNGDY DQEQFADNQI PLLVIGTKLD QIHETKRHEV LTTAFLAED FNPEEINLDC TNPRYLAAGS SNAVKLSRFF DKVIEKRYFL REGNQIPGFP DRKRFAGATL KSLHYD
Cross-Reactivity:	Human
Characteristics:	Antibody Reactive Against Recombinant Protein.

#### Target Details

Target:	RABL3
---------	-------

## Target Details

Alternative Name:	RABL3 ( <a href="#">RABL3 Products</a> )
Background:	Full Gene Name: RAB, member of RAS oncogene family-like 3 Synonyms: MGC23920
Gene ID:	285282

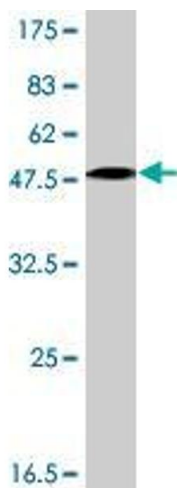
## Application Details

Application Notes:	Optimal working dilution should be determined by the investigator.
Restrictions:	For Research Use only

## Handling

Format:	Liquid
Buffer:	50 % glycerol
Handling Advice:	Aliquot to avoid repeated freezing and thawing.
Storage:	-20 °C
Storage Comment:	Store at -20°C or lower. Aliquot to avoid repeated freezing and thawing.

## Images



### Western Blotting

**Image 1.** Western Blot detection against Immunogen (52.07 KDa) .