



[Go to Product page](#)

Datasheet for ABIN531583
anti-CCDC66 antibody (AA 1-831)

1 Image

Overview

Quantity:	50 µg
Target:	CCDC66
Binding Specificity:	AA 1-831
Reactivity:	Human
Host:	Mouse
Clonality:	Polyclonal
Conjugate:	This CCDC66 antibody is un-conjugated
Application:	Western Blotting (WB)

Product Details

Purpose:	Mouse polyclonal antibody raised against a full-length human CCDC66 protein.
Immunogen:	CCDC66 (AAH47509.1, 1 a.a. ~ 831 a.a) full-length human protein.
Sequence:	<p>MQKTRNTVNT SLVGKQKPHK KHITAENMKS SLVCLTQDQL QQILMTVNQG NRSLSLTENG KEAKSQYSLY LNSISNQPKD ENIMGLFKKT EMVSSVPAEN KSVLNEHQET SKQCEQKIAI ENEWKPADIF STLGERECDR SSLEAKKAQW RKELDEQVAL KKKEKEVSEK WNDPWKKSSES DKIIEWEKHQI LDQSRETVLL EHPFSAVKQE LQRKWIEELN KQIEDDRQRK IEEKIISYSG EEHDRWAMHF DSLKSYPGSQ SQLFSRSTHK QPEYFCVSPD TQELADVSSV CTPPTGSQVE PSEEEHIAKP IKDVVMANSK KTNFLRSMTA LLDPAQIEER DRQRQKQLEH QKAITAQVEE KRRKKQLEEE QRKKEEQEEE LRLAQEREEM QKQYEEEDILK QKQKEEIMTL KTNELFQTMQ RAQELAQLRK QEQRIRELAQ KGHDTSRLIK NLGVDTIQME YNASNISNSR HDSDEISGKM NTYMNSTTSK KDTGVQTDDL NIGIFTNAES HCGSLMERDI TNCSSPEISA ELIGQFSTKK NKQELTQDKG ASLEKENNRC NDQCNQFTRI EKQTKHMKKY PKRPDWNINK PPKRYIPASE</p>

Product Details

KYPKQLQKQR EEKKVRRQME LLHLVEKNNP GHLSQNRGIS PEIFHSSHQE TESKLRWHLV
KKEEEPLNIH SFSKERSPSS PVPVVKNRTQ QTQNTLHLPL KNSSYERENL ISGSNQTELS
SGISESSHFI PYVRTNEIYY LDPDAPLSGP STQDPQYQNS QDCGQKRQLF DSDCVRDPLL
NPNMVKNRDR QQAILKGLSE LRQGLLQKQK ELESSLLPLA ENQEESFGSS F

Cross-Reactivity: Human

Characteristics: Antibody reactive against mammalian transfected lysate.

Target Details

Target: CCDC66

Alternative Name: CCDC66 ([CCDC66 Products](#))

Background: Full Gene Name: coiled-coil domain containing 66
Synonyms: DKFZp686C0433

Gene ID: 285331

Application Details

Application Notes: Optimal working dilution should be determined by the investigator.

Restrictions: For Research Use only

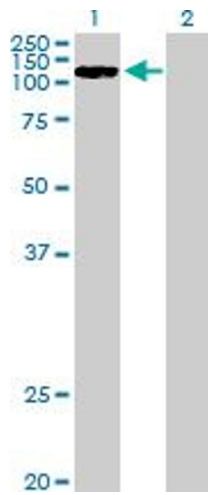
Handling

Buffer: In 1x PBS, pH 7.4

Handling Advice: Aliquot to avoid repeated freezing and thawing.

Storage: -20 °C

Storage Comment: Store at -20°C or lower. Aliquot to avoid repeated freezing and thawing.



Western Blotting

Image 1. Western Blot analysis of CCDC66 expression in transfected 293T cell line by CCDC66 MaxPab polyclonal antibody.

Lane 1: LOC285331 transfected lysate(91.41 KDa).

Lane 2: Non-transfected lysate.