



[Go to Product page](#)

Datasheet for ABIN531589

anti-ARL10 antibody (AA 1-276)

1 Image

Overview

Quantity:	50 µg
Target:	ARL10
Binding Specificity:	AA 1-276
Reactivity:	Human
Host:	Mouse
Clonality:	Polyclonal
Conjugate:	This ARL10 antibody is un-conjugated
Application:	Western Blotting (WB)

Product Details

Purpose:	Mouse polyclonal antibody raised against a full-length human ARL10 protein.
Immunogen:	ARL10 (AAH59361.1, 1 a.a. ~ 276 a.a) full-length human protein.
Sequence:	MAPRPLGPLV LALGGAAAVL GSVLFILWKT YFGRGRERRW DRGEAWWGAE AARLPEWDEW DPEDEEDEEP ALEELEQREV LVLGLDGAGK STFLRVLSGK PPLEGHIPTW GFNSVRLPTK DFEVDLLEIG GSQNLRFYWK EHVSEVDVLV FVVDSDRLR LPWARQELHK LLDKDPDLPV VVVANKQVRA VRGQLGPGDI HSEMLEQQQG ALPGPMAWRG WLRCCPHLFY LCPVLIPASV FLPLCLPIIS YSGEMRKIII KCLLYARHGV LFLFFF
Cross-Reactivity:	Human
Characteristics:	Antibody reactive against mammalian transfected lysate.

Target Details

Target:	ARL10
Alternative Name:	ARL10 (ARL10 Products)
Background:	Full Gene Name: ADP-ribosylation factor-like 10 Synonyms: ARL10A,FLJ39249
Gene ID:	285598

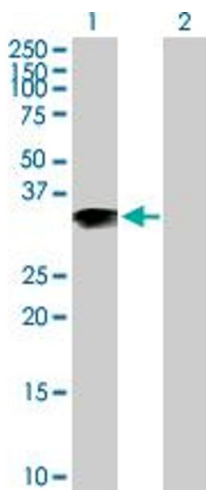
Application Details

Application Notes:	Optimal working dilution should be determined by the investigator.
Restrictions:	For Research Use only

Handling

Buffer:	In 1x PBS, pH 7.4
Handling Advice:	Aliquot to avoid repeated freezing and thawing.
Storage:	-20 °C
Storage Comment:	Store at -20°C or lower. Aliquot to avoid repeated freezing and thawing.

Images



Western Blotting

Image 1. Western Blot analysis of ARL10 expression in transfected 293T cell line by ARL10 MaxPab polyclonal antibody.

Lane 1: ARL10 transfected lysate(30.36 KDa).

Lane 2: Non-transfected lysate.