



Datasheet for ABIN531595  
**anti-TAF11L1 antibody (AA 1-183)**



[Go to Product page](#)

1 Image

Overview

Quantity:	50 µg
Target:	TAF11L1
Binding Specificity:	AA 1-183
Reactivity:	Human
Host:	Mouse
Clonality:	Polyclonal
Conjugate:	This TAF11L1 antibody is un-conjugated
Application:	Western Blotting (WB)

Product Details

Purpose:	Mouse polyclonal antibody raised against a full-length human LOC285697 protein.
Immunogen:	LOC285697 (XP_210642.1, 1 a.a. ~ 183 a.a) full-length human protein.
Sequence:	MPRGLKGSNK DGIPEDLDGN LEEPRDQEGE LRSQDVMDLT EGDKETSASA PPAKRLKTD TKGKKERKPT VDAEEAQRMT TLLSAMSEEQ LARYEVCQRQ AFPKARIAAL MQSITGSSVS ENVAIAMAGI AKVLVGEVVE EALDVCCEMWG EMPPLQPKHL REAVRRLKPK GLFPNSNYKK FMF
Cross-Reactivity:	Human
Characteristics:	Antibody reactive against mammalian transfected lysate.

Target Details

Target:	TAF11L1
---------	---------

## Target Details

Alternative Name:	LOC285697 ( <a href="#">TAF11L1 Products</a> )
Background:	Full Gene Name: similar to hCG1807616 Synonyms:
Gene ID:	285697
NCBI Accession:	<a href="#">XM_210642</a>

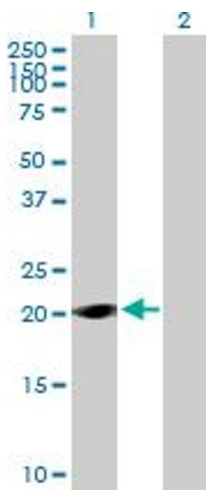
## Application Details

Application Notes:	Optimal working dilution should be determined by the investigator.
Restrictions:	For Research Use only

## Handling

Buffer:	In 1x PBS, pH 7.4
Handling Advice:	Aliquot to avoid repeated freezing and thawing.
Storage:	-20 °C
Storage Comment:	Store at -20°C or lower. Aliquot to avoid repeated freezing and thawing.

## Images



### Western Blotting

**Image 1.** Western Blot analysis of LOC285697 expression in transfected 293T cell line by LOC285697 MaxPab polyclonal antibody.

Lane 1: LOC285697 transfected lysate(20.13 KDa).

Lane 2: Non-transfected lysate.