



[Go to Product page](#)

Datasheet for ABIN531629

## anti-RAB43 antibody (AA 1-212)

### 1 Image

#### Overview

Quantity:	100 µg
Target:	RAB43
Binding Specificity:	AA 1-212
Reactivity:	Human
Host:	Rabbit
Clonality:	Polyclonal
Conjugate:	This RAB43 antibody is un-conjugated
Application:	Western Blotting (WB)

#### Product Details

Purpose:	Rabbit polyclonal antibody raised against a full-length human RAB43 protein.
Immunogen:	RAB43 (NP_940892.1, 1 a.a. ~ 212 a.a) full-length human protein.
Sequence:	MAGPGPGPGD PDEQYDFLFK LVLVGDA SVG KTCVVQRFKT GAFSERQGST IGVDFTMKTL EIQGKRVKLQ IWDTAGQERF RTITQSYIRS ANGAILAYDI TKRSSFLSVP HWIEDVRKYA GSNIVQLLIG NKSDLSELRE VSLAEQSLA EHYDILCAIE TSAKDSSNVE EAFLRVATEL IMRHGGPLFS EKSPDHIQLN SKDIGEGWGC GC
Cross-Reactivity:	Human
Characteristics:	Antibody reactive against mammalian transfected lysate.

#### Target Details

Target:	RAB43
---------	-------

## Target Details

Alternative Name:	RAB43 ( <a href="#">RAB43 Products</a> )
Background:	Full Gene Name: RAB43, member RAS oncogene family Synonyms: ISY1,MGC90481,RAB11B,RAB41
Gene ID:	339122
NCBI Accession:	<a href="#">NM_198490</a>

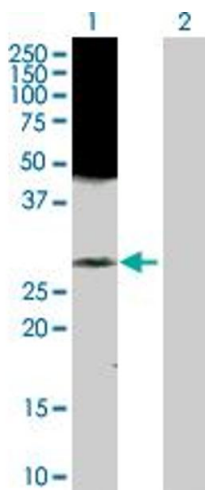
## Application Details

Application Notes:	Optimal working dilution should be determined by the investigator.
Restrictions:	For Research Use only

## Handling

Buffer:	In 1x PBS, pH 7.4
Handling Advice:	Aliquot to avoid repeated freezing and thawing.
Storage:	-20 °C
Storage Comment:	Store at -20°C or lower. Aliquot to avoid repeated freezing and thawing.

## Images



### Western Blotting

**Image 1.** Western Blot analysis of RAB43 expression in transfected 293T cell line by RAB43 MaxPab polyclonal antibody.

Lane 1: RAB43 transfected lysate(23.30 KDa).

Lane 2: Non-transfected lysate.