

Datasheet for ABIN531641
anti-SLC6A19 antibody (AA 326-414)[Go to Product page](#)

1 Image

Overview

Quantity:	50 µL
Target:	SLC6A19
Binding Specificity:	AA 326-414
Reactivity:	Human
Host:	Mouse
Clonality:	Polyclonal
Conjugate:	This SLC6A19 antibody is un-conjugated
Application:	ELISA, Western Blotting (WB)

Product Details

Purpose:	Mouse polyclonal antibody raised against a partial recombinant SLC6A19.
Immunogen:	SLC6A19 (NP_001003841, 326 a.a. ~ 414 a.a) partial recombinant protein with GST tag.
Sequence:	GFRATQRYDD CFSTNILT LI NGFDLPEGNV TQENFVDMQQ RCNASDPAAY AQLVFQTCDI NAFLSEAVEG TGLAFIVFTE AITKMPLSP
Cross-Reactivity:	Human
Characteristics:	Antibody Reactive Against Recombinant Protein.

Target Details

Target:	SLC6A19
Alternative Name:	SLC6A19 (SLC6A19 Products)

Target Details

Background:	Full Gene Name: solute carrier family 6 (neutral amino acid transporter), member 19 Synonyms: B0AT1,FLJ20680,FLJ34635,HND
Gene ID:	340024
NCBI Accession:	NM_001003841

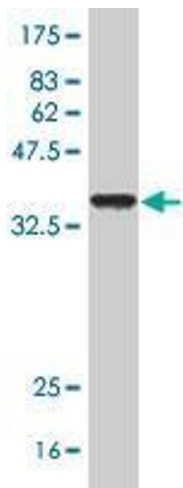
Application Details

Application Notes:	Optimal working dilution should be determined by the investigator.
Restrictions:	For Research Use only

Handling

Format:	Liquid
Buffer:	50 % glycerol
Handling Advice:	Aliquot to avoid repeated freezing and thawing.
Storage:	-20 °C
Storage Comment:	Store at -20°C or lower. Aliquot to avoid repeated freezing and thawing.

Images



Western Blotting

Image 1. Western Blot detection against Immunogen (35.9 KDa) .