



Datasheet for ABIN531644
anti-CTAGE6 antibody (AA 1-732)



[Go to Product page](#)

2 Images

Overview

| | |
|----------------------|---------------------------------------|
| Quantity: | 50 µg |
| Target: | CTAGE6 |
| Binding Specificity: | AA 1-732 |
| Reactivity: | Human |
| Host: | Mouse |
| Clonality: | Polyclonal |
| Conjugate: | This CTAGE6 antibody is un-conjugated |
| Application: | Western Blotting (WB) |

Product Details

| | |
|------------|---|
| Purpose: | Mouse polyclonal antibody raised against a full-length human CTAGE6 protein. |
| Immunogen: | CTAGE6 (AAH43153.1, 1 a.a. ~ 732 a.a) full-length human protein. |
| Sequence: | MCSCYWIFCC SPFFVEKFRS VRSRLYVGRE QKLGATLSGL IEEKCKLLEK FS LIQKEYEG YEVESSLEDA SFEKAAAEAA RSLEATCEKL NRSNSELEDE ILCLEKDLKE ESKKHSQQDE LMADISKSIQ SLEDESKSLK SQIAEAKIIC KTFKMSEERR AIAIKDALNE NSQLQTS HKQ LFQQEAEVWK GEVSELNKQK ITFEDSKVHA EQVLNDKENH IKTLTGHLPM MKDQAAVLEE DTTDDDNLLEL EVNSQWENGA NLDDPLK GAL KKLIIHAAKLN VSLKSLEGER NHIIIQLSEV DKTKEELTEH IKNLQTQQES LQSENIYFES ENQKLQQK LK IMTEFYQEDE MKLYRKL TVE ENYRIEGEEK LSKVEEKLSR ATEQLETYRK LAKDLEEELE RTVHFYQKQV ISYEKRGHDN WLAARTAERN LSDLRKENAH NKQKLTETEL KFELLEKDPN ALDVSNTAFG REHAPNGPAP LGQRSSETRA FLSPQTLLED PLGLSPVLPE GGGRGPRGPG NPLDHQITNE RGEPSCDRLT DPHRAPSDTG SLSSPVEQDC KMMFPPPGQS YPDSALPPQR EDRFYSNSER LSGSAEPRSF |

Product Details

KMTSLDKMDG SMPSEMESSR NDAKDDLGNL NVPDSSLPAE NEATGPGFIP PPLAPVRGPL
FPVDTRGPFM RRGPPFPPPP PGTMFGASRG YFPPRDFPGP PHAPFAMRNI YPPRGLPPYF
HPRPGFYFNP AF

Cross-Reactivity: Human, Rat

Characteristics: Antibody reactive against mammalian transfected lysate.

Target Details

Target: CTAGE6

Alternative Name: CTAGE6 ([CTAGE6 Products](#))

Background: Full Gene Name: CTAGE family, member 6
Synonyms: MGC41943

Gene ID: 340307

Application Details

Application Notes: Optimal working dilution should be determined by the investigator.

Restrictions: For Research Use only

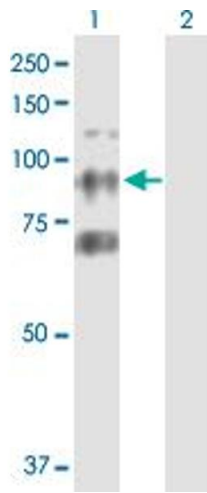
Handling

Buffer: In 1x PBS, pH 7.4

Handling Advice: Aliquot to avoid repeated freezing and thawing.

Storage: -20 °C

Storage Comment: Store at -20°C or lower. Aliquot to avoid repeated freezing and thawing.

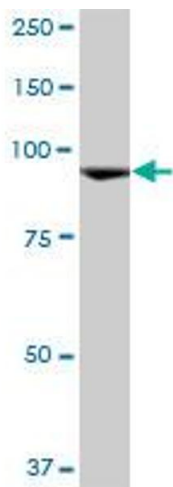


Western Blotting

Image 1. Western Blot analysis of CTAGE6 expression in transfected 293T cell line by CTAGE6 MaxPab polyclonal antibody.

Lane 1: CTAGE6 transfected lysate(80.52 KDa).

Lane 2: Non-transfected lysate.



Western Blotting

Image 2. CTAGE6 MaxPab polyclonal antibody. Western Blot analysis of CTAGE6 expression in rat brain.