



[Go to Product page](#)

Datasheet for ABIN531669  
**anti-SLC10A6 antibody (AA 1-377)**

1 Image

Overview

Quantity:	50 µg
Target:	SLC10A6
Binding Specificity:	AA 1-377
Reactivity:	Human
Host:	Mouse
Clonality:	Polyclonal
Conjugate:	This SLC10A6 antibody is un-conjugated
Application:	Western Blotting (WB)

Product Details

Purpose:	Mouse polyclonal antibody raised against a full-length human SLC10A6 protein.
Immunogen:	SLC10A6 (NP_932069, 1 a.a. ~ 377 a.a) full-length human protein.
Sequence:	MRANCSSSSA CPANSSEEL PVGLEVHGNL ELVFTVVSTV MMGLLMFSLG CSVEIRKLWS HIRRPWGIAV GLLCQFGLMP FTAYLLAISF SLKPVQIAIV LIMGCCPGGT ISNIFTFWVD GDMDLSISMT TCSTVAALGM MPLCIYLYTW SWSLQQNLT I PYQNIGITLV CLTIPVAFGV YVNYRWPQKS KIILKIGAVV GGVLVVAV AGVVLAKGSW NSDITLLTIS FIFPLIGHVT GFLALFTHQ SWQRCRTISL ETGAQNIQMC ITMLQLSFTA EHLVQMLSFP LAYGLFQLID GFLIVAAYQT YKRRLLKNKHG KKNSGCTEVC HTRKSTSSRE TNAFLEVNEE GAITPGPPGP MDCHRALEPV GHITSCE
Cross-Reactivity:	Human
Characteristics:	Antibody reactive against mammalian transfected lysate.

## Target Details

Target:	SLC10A6
Alternative Name:	SLC10A6 ( <a href="#">SLC10A6 Products</a> )
Background:	Full Gene Name: solute carrier family 10 (sodium/bile acid cotransporter family), member 6 Synonyms: MGC129575,MGC129576,SOAT
Gene ID:	345274
NCBI Accession:	<a href="#">NM_197965</a>

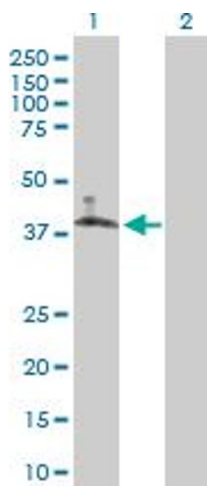
## Application Details

Application Notes:	Optimal working dilution should be determined by the investigator.
Restrictions:	For Research Use only

## Handling

Buffer:	In 1x PBS, pH 7.4
Handling Advice:	Aliquot to avoid repeated freezing and thawing.
Storage:	-20 °C
Storage Comment:	Store at -20°C or lower. Aliquot to avoid repeated freezing and thawing.

## Images



### Western Blotting

**Image 1.** Western Blot analysis of SLC10A6 expression in transfected 293T cell line by SLC10A6 MaxPab polyclonal antibody.

Lane 1: SLC10A6 transfected lysate(41.47 KDa).

Lane 2: Non-transfected lysate.