



[Go to Product page](#)

Datasheet for ABIN531671  
**anti-PLCXD3 antibody (AA 1-321)**

1 Image

Overview

Quantity:	50 µg
Target:	PLCXD3
Binding Specificity:	AA 1-321
Reactivity:	Human
Host:	Mouse
Clonality:	Polyclonal
Conjugate:	This PLCXD3 antibody is un-conjugated
Application:	Western Blotting (WB)

Product Details

Purpose:	Mouse polyclonal antibody raised against a full-length human PLCXD3 protein.
Immunogen:	PLCXD3 (NP_001005473.1, 1 a.a. ~ 321 a.a) full-length human protein.
Sequence:	MASSQGKNEL KLADWMATLP ESMHSIPLTN LAIPGSHDSF SFYIDEASPV GPEQPETVQN FVSVFGTVAK KLMRKWLATQ TMNFTGQLGA GIRYFDLRIS TKPRDPDNEL YFAHGLFSAK VNEGLEEINA FLTDHHKEVV FLDFNHFYGM QKYHHEKLVQ MLKDIYGNKM CPAIFAQEVS LKYLWEKDYQ VLVFYHSPVA LEVPFLWPGQ MMPAPWANTT DPEKLIQFLQ ASITERRKKG SFFISQVVLTKASTVVKGV ASGLRETITE RALPAMMQWV RTQKPGESGI NIVTADFVEL GDFISTVIKL NYVFDEGEAN T
Cross-Reactivity:	Human
Characteristics:	Antibody reactive against mammalian transfected lysate.

## Target Details

Target:	PLCXD3
Alternative Name:	PLCXD3 ( <a href="#">PLCXD3 Products</a> )
Background:	Full Gene Name: phosphatidylinositol-specific phospholipase C, X domain containing 3 Synonyms:
Gene ID:	345557
NCBI Accession:	<a href="#">NM_001005473</a>

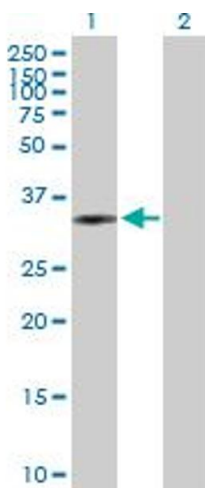
## Application Details

Application Notes:	Optimal working dilution should be determined by the investigator.
Restrictions:	For Research Use only

## Handling

Buffer:	In 1x PBS, pH 7.4
Handling Advice:	Aliquot to avoid repeated freezing and thawing.
Storage:	-20 °C
Storage Comment:	Store at -20°C or lower. Aliquot to avoid repeated freezing and thawing.

## Images



### Western Blotting

**Image 1.** Western Blot analysis of PLCXD3 expression in transfected 293T cell line by PLCXD3 MaxPab polyclonal antibody.

Lane 1: PLCXD3 transfected lysate(35.31 KDa).

Lane 2: Non-transfected lysate.