



[Go to Product page](#)

Datasheet for ABIN531771
anti-TAF11L4 antibody (AA 1-198)

1 Image

Overview

Quantity:	50 µg
Target:	TAF11L4
Binding Specificity:	AA 1-198
Reactivity:	Human
Host:	Mouse
Clonality:	Polyclonal
Conjugate:	This TAF11L4 antibody is un-conjugated
Application:	Western Blotting (WB)

Product Details

Purpose:	Mouse polyclonal antibody raised against a full-length human LOC391746 protein.
Immunogen:	LOC391746 (XP_373058.2, 1 a.a. ~ 198 a.a) full-length human protein.
Sequence:	METGRQTGVS AEMLAMPRGL KGSKKDGIPE DLDGNLEAPR DQEGELRSED VMDLTEGDSE ASASAPPAK RRKTHTKGKK ESKPTVDAEE AQRMTTLSS MSEEQLSRYE VCCRSAFPRA RVAGLMRAIT GSSVSENAAI AMAGIAKLFV GEVVEEALDV CEMWGETPPL QPKHLREAVR RLKPKGLFPN SNCKRIMF
Cross-Reactivity:	Human
Characteristics:	Antibody reactive against mammalian transfected lysate.

Target Details

Target:	TAF11L4
---------	---------

Target Details

Alternative Name:	LOC391746 (TAF11L4 Products)
Background:	Full Gene Name: similar to hCG1809904 Synonyms:
Gene ID:	391746
NCBI Accession:	XM_373058

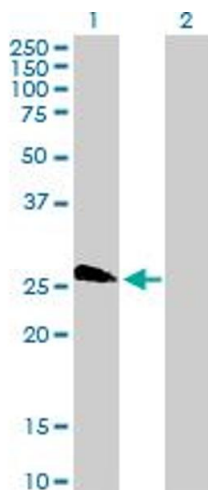
Application Details

Application Notes:	Optimal working dilution should be determined by the investigator.
Restrictions:	For Research Use only

Handling

Buffer:	In 1x PBS, pH 7.4
Handling Advice:	Aliquot to avoid repeated freezing and thawing.
Storage:	-20 °C
Storage Comment:	Store at -20°C or lower. Aliquot to avoid repeated freezing and thawing.

Images



Western Blotting

Image 1. Western Blot analysis of LOC391746 expression in transfected 293T cell line by LOC391746 MaxPab polyclonal antibody.

Lane 1: LOC391746 transfected lysate(21.78 KDa).

Lane 2: Non-transfected lysate.