

Datasheet for ABIN531778
anti-METTL10 antibody (AA 1-192)[Go to Product page](#)

2 Images

Overview

Quantity:	50 µL
Target:	METTL10
Binding Specificity:	AA 1-192
Reactivity:	Human
Host:	Mouse
Clonality:	Polyclonal
Conjugate:	This METTL10 antibody is un-conjugated
Application:	Western Blotting (WB)

Product Details

Purpose:	Mouse polyclonal antibody raised against a full-length human LOC399818 protein.
Immunogen:	LOC399818 (AAH26167, 1 a.a. ~ 192 a.a) full-length human protein.
Sequence:	MSSGADGGGG AAVAARSDKG SPGEDGFVPS ALGTREHWDA VYERELQTFR EYGDTGEIWF GEESMNRLIR WMQKHKIPLD ASVLDIGTGN GVFLVELAKF GFSNITGIDY SPSAIQLSGS IIEKEGLSNI KLKVEDFLNL STQLSGFHIC IDKGTFDAIS LNPDNAIEKR KQYVKSLSRV LKVKGFFSNN VM
Cross-Reactivity:	Human
Characteristics:	Antibody reactive against mammalian transfected lysate.

Target Details

Target:	METTL10
---------	---------

Target Details

Alternative Name:	METTL10 (METTL10 Products)
Background:	Full Gene Name: methyltransferase like 10 Synonyms:
Gene ID:	399818

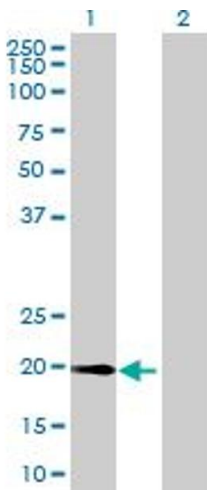
Application Details

Application Notes:	Optimal working dilution should be determined by the investigator.
Restrictions:	For Research Use only

Handling

Format:	Liquid
Buffer:	No additive
Preservative:	Without preservative
Handling Advice:	Aliquot to avoid repeated freezing and thawing.
Storage:	-20 °C
Storage Comment:	Store at -20°C or lower. Aliquot to avoid repeated freezing and thawing.

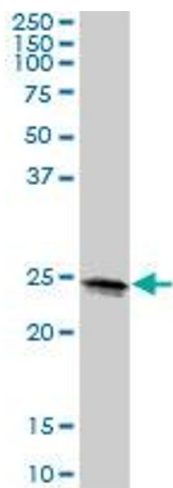
Images



Western Blotting

Image 1. Western Blot analysis of METTL10 expression in transfected 293T cell line by METTL10 MaxPab polyclonal antibody.

Lane 1: LOC399818 transfected lysate(21.12 KDa).
Lane 2: Non-transfected lysate.



Western Blotting

Image 2. LOC399818 MaxPab polyclonal antibody. Western Blot analysis of LOC399818 expression in human kidney.