



[Go to Product page](#)

Datasheet for ABIN531786
anti-CENPP antibody (AA 1-288)

1 Image

Overview

Quantity:	50 µg
Target:	CENPP
Binding Specificity:	AA 1-288
Reactivity:	Human
Host:	Mouse
Clonality:	Polyclonal
Conjugate:	This CENPP antibody is un-conjugated
Application:	Western Blotting (WB)

Product Details

Purpose:	Mouse polyclonal antibody raised against a full-length human CENPP protein.
Immunogen:	CENPP (NP_001012267.1, 1 a.a. ~ 288 a.a) full-length human protein.
Sequence:	MDAELAEVRA LQAEIAALRR ACEDPPAPWE EKSRVQKSFQ AIHQFNLEGW KSSKDLKNQL GHLESELSFL STLTGINIRN HSKQTEDLTS TEMTEKSIRK VLQRHRLSGN CHMVTFQLEF QILEIQNKER LSSAVTDLNI IMEPTCESEL SEFVSRAEER KDLFMFFRSL HFFVEWFEYR KRTFKHLKEK YPDAVYLSEG PSSCSMGIRS ASRPGFELVI VWRIQIDEDG KVFPKLDLLT KVPQRALELD KNRAIETAPL SFRTLVLGLLG IEAALESNIK SLCAEENN
Cross-Reactivity:	Human
Characteristics:	Antibody reactive against mammalian transfected lysate.

Target Details

Target:	CENPP
Alternative Name:	CENPP (CENPP Products)
Background:	Full Gene Name: centromere protein P Synonyms: CENP-P,FLJ33928
Gene ID:	401541
NCBI Accession:	NM_001012267

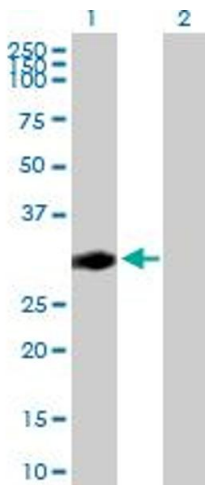
Application Details

Application Notes:	Optimal working dilution should be determined by the investigator.
Restrictions:	For Research Use only

Handling

Buffer:	In 1x PBS, pH 7.4
Handling Advice:	Aliquot to avoid repeated freezing and thawing.
Storage:	-20 °C
Storage Comment:	Store at -20°C or lower. Aliquot to avoid repeated freezing and thawing.

Images



Western Blotting

Image 1. Western Blot analysis of CENPP expression in transfected 293T cell line by CENPP MaxPab polyclonal antibody.

Lane 1: CENPP transfected lysate(31.68 kDa).

Lane 2: Non-transfected lysate.